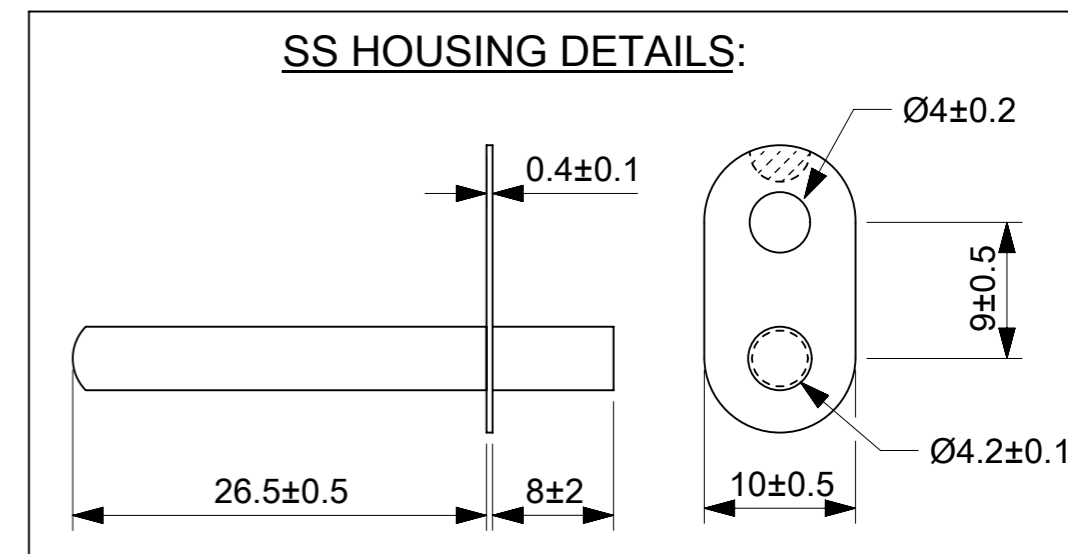


NOTES:

1. RESISTANCE @ 25°C : 10KΩ ± 1%
2. BETA VALUE (0/50°C) : 4035K ± 1%
3. OPERATING TEMPERATURE RANGE : -40°C TO +250°C.
4. THERMAL TIME CONSTANT : 15SEC IN WATER
5. VOLTAGE BREAKDOWN STRENGTH : 1500V AC FOR 3SEC.
6. INSULATION RESISTANCE : A MINIMUM OF 100MΩ @ 500VOLTS DC.
7. DISSIPATION FACTOR : 1mW/°C.
8. LASER MARKING "MOLEX-DATE CODE(MM/YY)" & "XXK(R25-value) XXXX(B-value)"



FUNCTIONAL SYMBOLS FA = 0 FE = 0 FE = 0	THIS DRAWING CONTAINS INFORMATION THAT IS PROPRIETARY TO MOLEX ELECTRONIC TECHNOLOGIES, LLC AND SHOULD NOT BE USED WITHOUT WRITTEN PERMISSION		CURRENT REV DESC:		molex		
	DIMENSION UNITS	SCALE	EC NO: 733229			GLASS NTC MOUNTING -10K±1%,B4035,L100	
DIVISIONAL SYMBOLS	mm	NTS	DRWN: NANDAK 2022/12/23		PRODUCT CUSTOMER DRAWING		
	GENERAL TOLERANCES (UNLESS SPECIFIED)		CHK'D: RBBHASKAR 2022/12/23				
	ANGULAR TOL ± °		APPR: RBBHASKAR 2022/12/23				
	4 PLACES ±		INITIAL REVISION:				
3 PLACES ±		DRWN: RAVIKM 2022/01/28		DOCUMENT NUMBER	DOC TYPE	DOC PART	REVISION
2 PLACES ±		APPR: RBBHASKAR 2022/02/10		2185373617	PSD	000	B4
1 PLACE ±		DRAFT WHERE APPLICABLE MUST REMAIN WITHIN DIMENSIONS		MATERIAL NUMBER	CUSTOMER	SHEET NUMBER	
0 PLACES ±		THIRD ANGLE PROJECTION	DRAWING	SERIES	2185373617	GENERAL MARKET	1 OF 2
			A3-SIZE	218537			

