



Electrical specifications

Center Frequency: 3413.5 MHz
Passband bandwidth: 10 MHz
Insertion loss over PB: 3.0 dB@3408.5-3418.5 MHz
Return loss: 16 dB@3408.5-3418.5 MHz
IL Variation: 3.0 dB over PB
Rejection 1: 60 dBc min@DC(CF-20) MHz,
Rejection 2: 60 dBc min@(CF+20)MHz- 6200 MHz
Group delay variation: 50 ns over any 0.5 MHz in PB
Power: 1 Watt

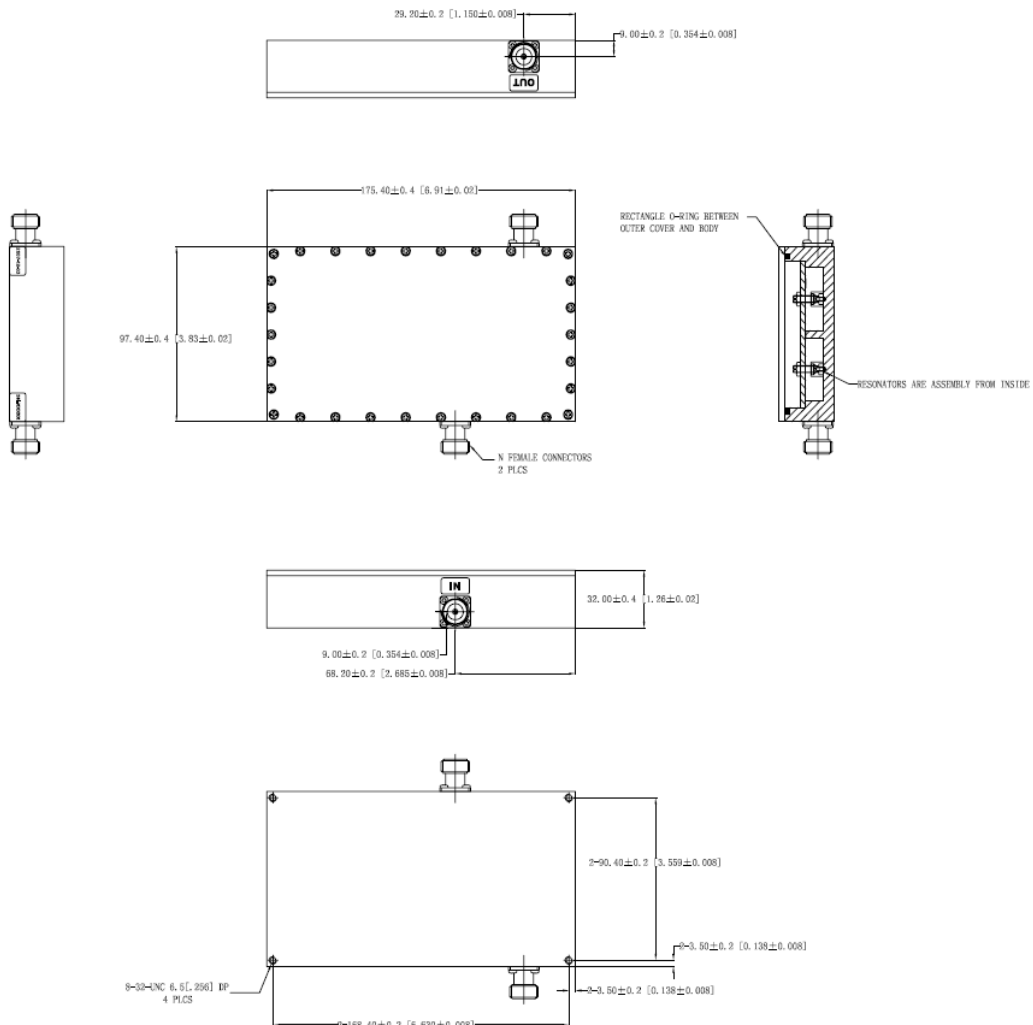
Mechanical

Mounting Method: Threaded Mounting Holes
Connector Type: N-Type female
Dimensions: 6.93" x 3.86" x 1.28" in

Environmental

Operating Temperature: -45 to +85° C
Storage Temperature: -55 to +95° C
Shock: 20 G. 11ms
Vibration: 20 G. 5 to 200 MHz

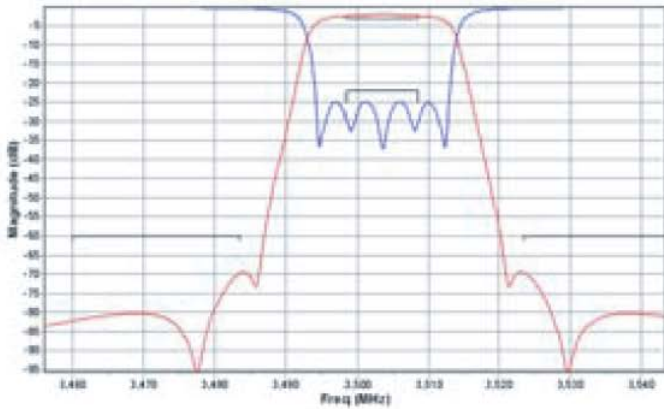
Outline Drawing:



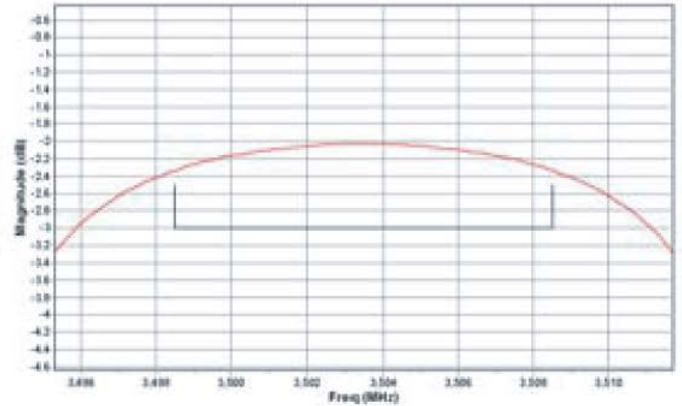


Plot:

Rejection & Return Loss



Insertion loss



Group Delay

