

Bandpass Filter

BPF-A800+

50Ω 795 to 805 MHz

Maximum Ratings

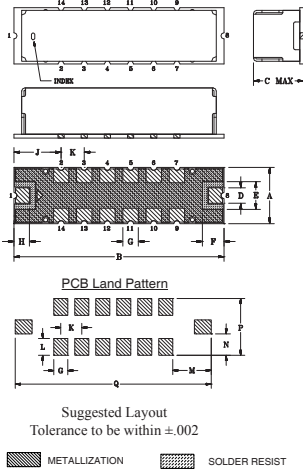
Operating Temperature	-40°C to 85°C
Storage Temperature	-55°C to 100°C
RF Power Input*	0.5W at 25°C

*Passband rating, derate linearly to 0.25W at 100°C ambient. Permanent damage may occur if any of these limits are exceeded.

Pin Connections

RF IN	1
RF OUT	8
GROUND	2,3,4,5,6,7,9,10,11,12,13,14

Outline Drawing

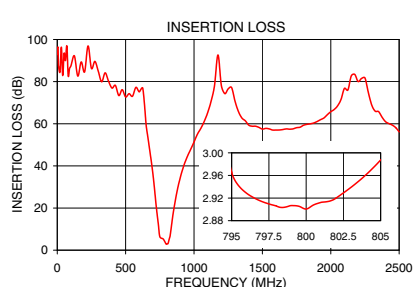
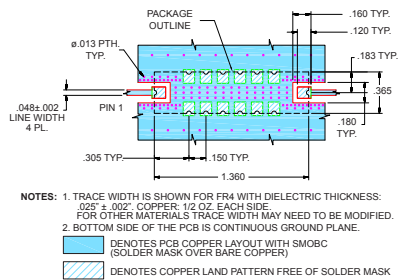


Outline Dimensions (inch/mm)

A	B	C	D	E	F	G	H
.365	1.360	.35	.100	.180	.140	.100	.100
9.27	34.54	8.89	2.54	4.57	3.56	2.54	2.54
J	K	L	M	N	P	Q	Wt.
.305	.150	.120	.275	.152	.405	1.400	grams
7.75	3.81	3.05	6.99	3.86	10.29	35.56	4.0

Note: Please refer to case style drawing for details

Demo Board MCL P/N: TB-363+ Suggested PCB Layout (PL-227)

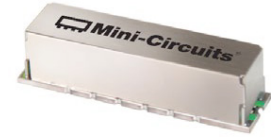


Features

- Linear phase, up to ±0.3 deg typ @ Fc ± 7.5 MHz
- Good VSWR, 1.3:1 typ @ passband
- High rejection
- Shielded case
- Aqueous washable

Applications

- Military radio
- Harmonic rejection
- Transmitters/receivers



Generic photo used for illustration purposes only

CASE STYLE: HQ1157

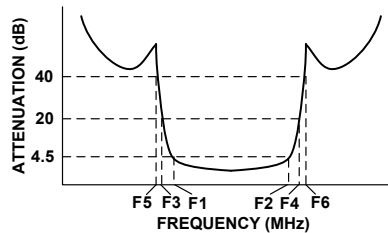
+RoHS Compliant

The +Suffix identifies RoHS Compliance. See our web site for RoHS Compliance methodologies and qualifications

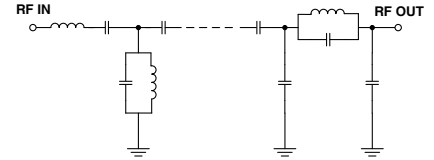
Bandpass Filter Electrical Specifications (T_{AMB} = 25°C)

CENTER FREQ. (MHz)	PASSBAND (MHz) (Loss < 4.5dB)	STOPBANDS (MHz)				MAXIMUM DEVIATION FROM LINEAR PHASE (deg.)	VSWR (:1)		
		Loss > 20dB	Loss > 40dB	F3	F4		Passband	Stopband	
Fc	F1 - F2	F3	F4	F5	F6	Fc ± 7.5MHz	Typ.	Max.	
800	795 - 805	700	900	660	1000-2500	±1	1.3	1.8	20

Typical Frequency Response

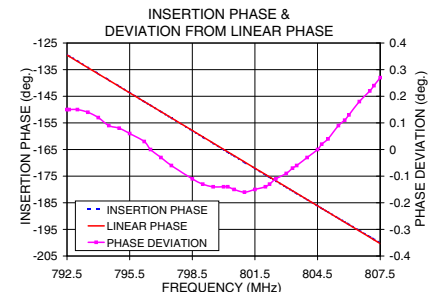
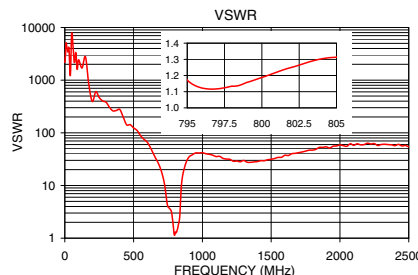


Functional Schematic



Typical Performance Data at 25°C

Frequency (MHz)	Insertion Loss (dB)	VSWR (:1)	Frequency (MHz)	Deviation from Linear Phase (deg.)
0.5	92.80	2173.44	792.5	0.15
300	84.93	379.70	793.0	0.15
660	54.83	32.89	793.5	0.14
700	35.84	19.27	794.0	0.12
725	20.14	10.67	795.0	0.08
740	11.89	5.27	796.0	0.05
775	5.28	3.17	797.0	-0.03
795	2.97	1.17	798.0	-0.06
798	2.91	1.13	799.0	-0.13
800	2.90	1.19	800.0	-0.14
802	2.92	1.25	801.0	-0.16
805	2.99	1.31	802.0	-0.14
820	5.55	1.53	803.0	-0.09
835	11.43	2.52	803.5	-0.06
850	18.46	11.66	804.0	-0.03
900	34.54	34.18	805.0	0.04
1000	51.34	42.01	806.0	0.13
2500	56.18	54.41	807.5	0.27



Notes

- Performance and quality attributes and conditions not expressly stated in this specification document are intended to be excluded and do not form a part of this specification document.
- Electrical specifications and performance data contained in this specification document are based on Mini-Circuit's applicable established test performance criteria and measurement instructions.
- The parts covered by this specification document are subject to Mini-Circuit's standard limited warranty and terms and conditions (collectively, "Standard Terms"); Purchasers of this part are entitled to the rights and benefits contained therein. For a full statement of the Standard Terms and the exclusive rights and remedies thereunder, please visit Mini-Circuit's website at www.minicircuits.com/MCLStore/terms.jsp

