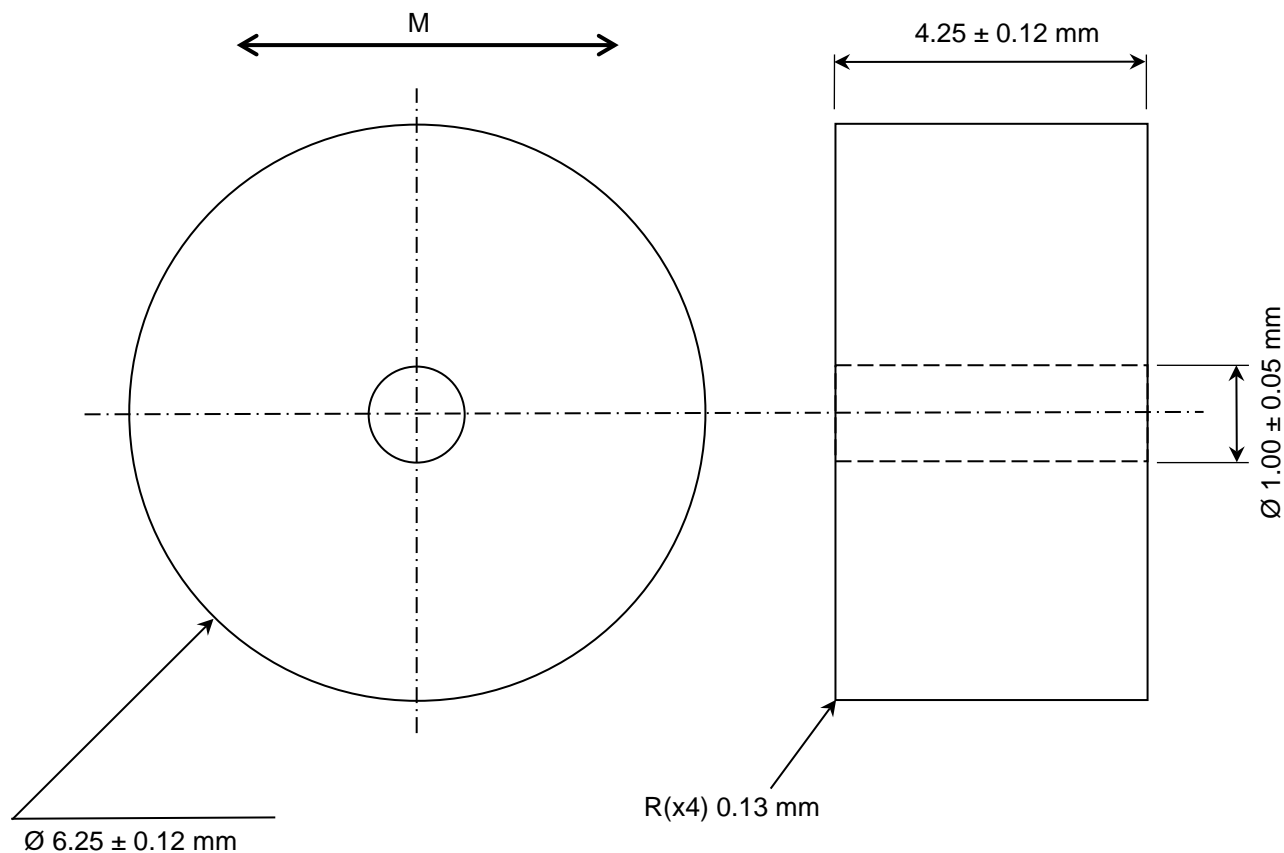


1. MAGNET PROPERTIES PER N38SH:

Br: 12,200-12,700 G  
 Hc: 11,300-12,000 Oe  
 Hci: ≥20,000 Oe  
 BH<sub>(max)</sub>: 36-39 MGOe  
 T max: 150° C (302° F)

2. NICKEL PLATED

3. MAGNETIZED ACROSS DIAMETER



| Rev | Date | By |
|-----|------|----|
|     |      |    |
|     |      |    |
|     |      |    |

**TOLERANCES**  
 (UNLESS OTHERWISE NOTED)

|                |              |
|----------------|--------------|
| DECIMAL        | METRIC       |
| X.XX = ± .01   | X.X = ± .25  |
| X.XXX = ± .005 | X.XX = ± .13 |

**ANGLES**  
 ± .5°

DO NOT SCALE DRAWING

|   |            |                        |
|---|------------|------------------------|
| <b>Alliance LLC</b>                         |            |                        |
| 1450 CLARK DRIVE, VALPARAISO, INDIANA 46385 |            |                        |
| DESCRIPTION: RARE EARTH RING MAGNET         |            |                        |
| <b>P/N: YB-074-1</b>                        |            | <b>SPINDLE MAGNET</b>  |
| MATERIAL: NdFeB                             | Dwg by: BT | REV LEVEL: A           |
| COATING: Nickel                             | Apr by: DV | Apr. Dated: 03-14-2020 |