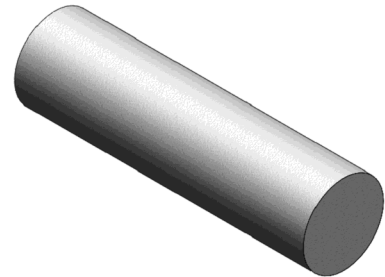
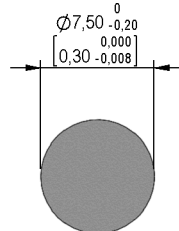
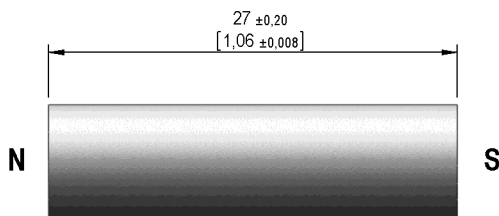


**Dimensions mm[inch]**  
 tolerances acc. to DIN ISO 2768-m  
 Toleranzen gem. DIN ISO 2768-m

**Isometric**  
 Scale 2:1  
 Maßstab 2:1



Mag. values DIN IEC 60404-8-	Conditions	Min	Typ	Max	Unit
Energy product (B x H) max.		33	36		kJ/cu m
Remanent Induction Br		1.200	1.320		mT
Revers. temp. coeff. of Br			-0,02		%/K
Coercivity HcB		44	48		kA/m
Intrinsic Coercivity HcJ		45	50		kA/m
Density			7,3		g/cu cm
Max. operating temperature				520	°C
Magnetic moment	measured with MS150	83,2	93,4		E-6 Vs*cm
Magnet Material		AlNiCo 5C			
Direction of Magnetization					