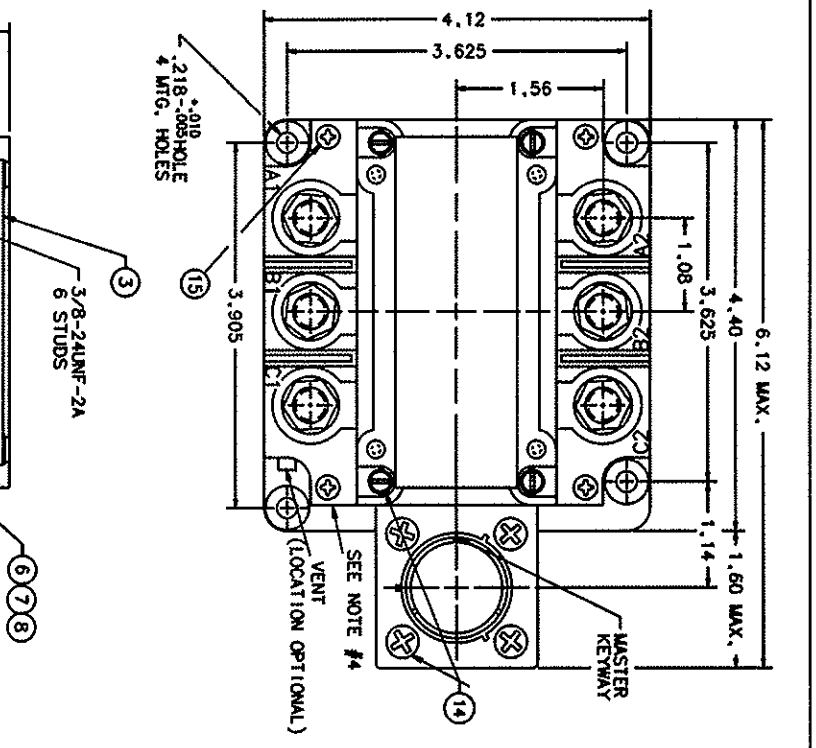


REVISIONS		RELEASED	APPROVED
REV.	DESCRIPTION	DATE	
F	23900 FIND NO 11 P/N WAS 39529-001	94/04/05	RS
G	27476 WEIGHT MAX WAS 40 LBS	95/03/25	RS
H	35451 NOTE 5 ADDED	98/05/04	RS
J	39516 'BOEING' ADDED TO VIB SPEC, SHOCK & CONNECTOR P/N, .87 MIN ADDED	99/05/11	RS
K	0227-03 .05 REF WAS .05	03/02/26	CC



CONSTRUCTION
 MAIN CONTACTS
 VOLTAGE RES.
 CURRENT RES.
 SUB TRANSIENT SHORT CIRCUIT INTERRUPT

AUXILIARY CONTACTS
 CONFIGURATION
 VOLTAGE
 CURRENT

COIL DATA
 DUTY CYCLE
 OPERATING VOLTAGE
 PICKUP
 NOMINAL
 DROPOUT
 CURRENT
 HOLD

ENVIRONMENTAL DATA
 OPERATING TEMP.
 VIBRATION
 ACCELERATION
 SHOCK
 ALTITUDE
 OPERATE TIME
 PICKUP
 DROPOUT
 LIFE ELECTRICAL
 LIFE MECHANICAL
 WEIGHT MAX.

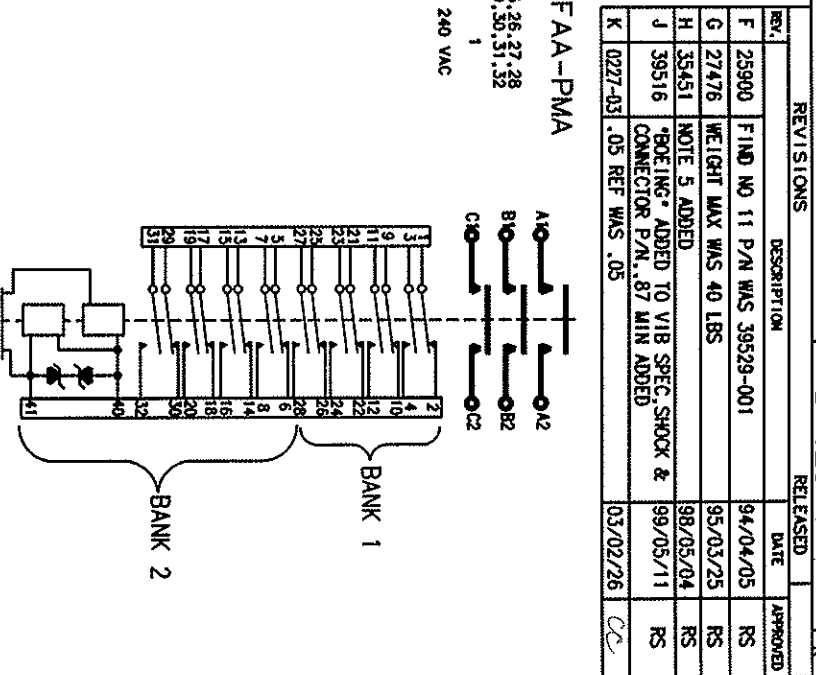
GASLET SEALED (VENTED)
 3PST N.O. (DOUBLE BREAK)
 115/200 VOLTS FREQ. 400 HZ.
 275 AMP 115/200 VAC CONTINUOUS
 350 AMP 115/200 VAC FOR 5 MINS.
 450 AMP 115/200 VAC FOR 5 SECONDS.
 4000 AMP
 2800 AMP
 3500 AMP

CONTINUOUS (ECONOMIZING)
 15 TO 37.5 VDC
 15 VOLTS
 28 VOLTS
 1.5 TO 10 VDC
 6 AMPS MAX.
 .6 AMPS MAX.

PER BOEING DB-44589-22, CAT. A
 MIL STD-810C METHOD 513.2
 PER BOEING DB-44589 PARA 2.3
 45,000 FT.

-55°C MIN., +85°C MAX.
 PER BOEING DB-44589-22, CAT. A
 MIL STD-810C METHOD 513.2
 PER BOEING DB-44589 PARA 2.3
 45,000 FT.

20 MSEC MAX. AT 20VDC
20 MSEC MAX. AT 20VDC
50,000 CYCLES MIN.
100,000 CYCLES MIN.
4.0 LBS.



CONSTRUCTION, 3 PHASE
 275 AMP, 115/200 VOLTS, 400 HZ
 275 COIL VOLTAGE, 28 VDC
 SPECIFICATION CS811004-2
 SERIAL NO. B-429-1
 NATIONAL ELECTRONICS MFG.
 WASHINGTON, OHIO

NOTES:
 1.) THIS UNIT MEETS THE MATERIAL AND WORKMANSHIP REQUIREMENT OF MIL-R-6106.
 2.) MOUNTING SURFACE SHALL PROVIDE ELECTRICAL GROUND.
 3.) TERMINAL COVER ITEM #3 REMOVED FROM TOP VIEW.
 4.) EFFECTIVE WITH S/N C030086 FOUR COVER SCREWS WILL BE COUNTERSUNK BELOW THE BASE LEVEL.
 5. FAA/PMA PLATE (AND OVERLAY) NOT REQUIRED ON UNITS SUPPLIED TO ORIGINAL EQUIPMENT MANUFACTURERS.

REV.	DESCRIPTION	DATE	APPROVED
15	AR 54100-001 SILASTIC		
14	AR 54102-001 GLYPTOL		
13	1 39529-024 OVERLAY FAA/PMA		
12	1 39529-008 OVERLAY-WIRING DIAGRAM		
11	1 39529-009 OVERLAY-NAMEPLATE		
10	1 58400-028 PLATE - FAA/PMA		
9	1 25695-001 PLATE - WARNING		
8	6 51807-230 WASHER-LOCK .375 X .687 X .094 SPLIT		MS35338-141 ST. STEEL
7	6 51704-010 WASHER .390 X .625 X .032 FLAT		AN960C6161 ST. STEEL
6	6 50407-370 NUT 3/8-24 X .562 X .328 HEX.		MS51972-3 ST. STEEL
5			
4	1 35924-020 CONTACTOR ASSEMBLY PRI.		
3	2 36006-010 COVER-TERMINAL ASSEMBLY		
2	1 35935-001 PLATE -WIRING DIAGRAM		
1	1 40190-001 PLATE-NAME		
FIND	CITY	PART OR IDENTIFYING NO	NOMINATOR OR DESCRIPTION
NO	REQD		
UNLESS OTHERWISE SPECIFIED DIMENSIONS ARE IN INCHES TOLERANCES ARE			
2 PL. DEC. 13 PL. DEC. ANGLES			
±.06 F. 010 ±1°			
REF. BOEING S281T004-2			
DR BY CSC 103/03/05			
CHK BY CC 03/03/06			
ENGR AS 03-03-06			
SIZE 1/8 03-03-07			
MATERIAL			
C 74063			
SCALE NONE SHEET			
TYCO Electronics			
121 Hortonville, Ohio 44135			
CONTRACTOR - 3PST N.O.			
275 AMP 115/200V, 400 HZ			
DWG NO. B-429-1			
REF TYCO P/N 0-1616005-1			