



**ANATECH ELECTRONICS INC**  
RF & Microwave Filters & Products

# DC-20 MHz Lowpass Filter

**Part Number: AE20L8953**



## Electrical Specifications

**Pass Band Frequency:** DC – 20 MHz  
**Insertion Loss:** 1dB Max @ 1 – 20 MHz  
**Return Loss:** 14dB Min @ 1-20 MHz  
**Stop Band Attenuation:** 55dB Min. @ 30-40 MHz  
**Impedance:** 50 Ohms

Note: For SMA Version Use PN: AE20L9248

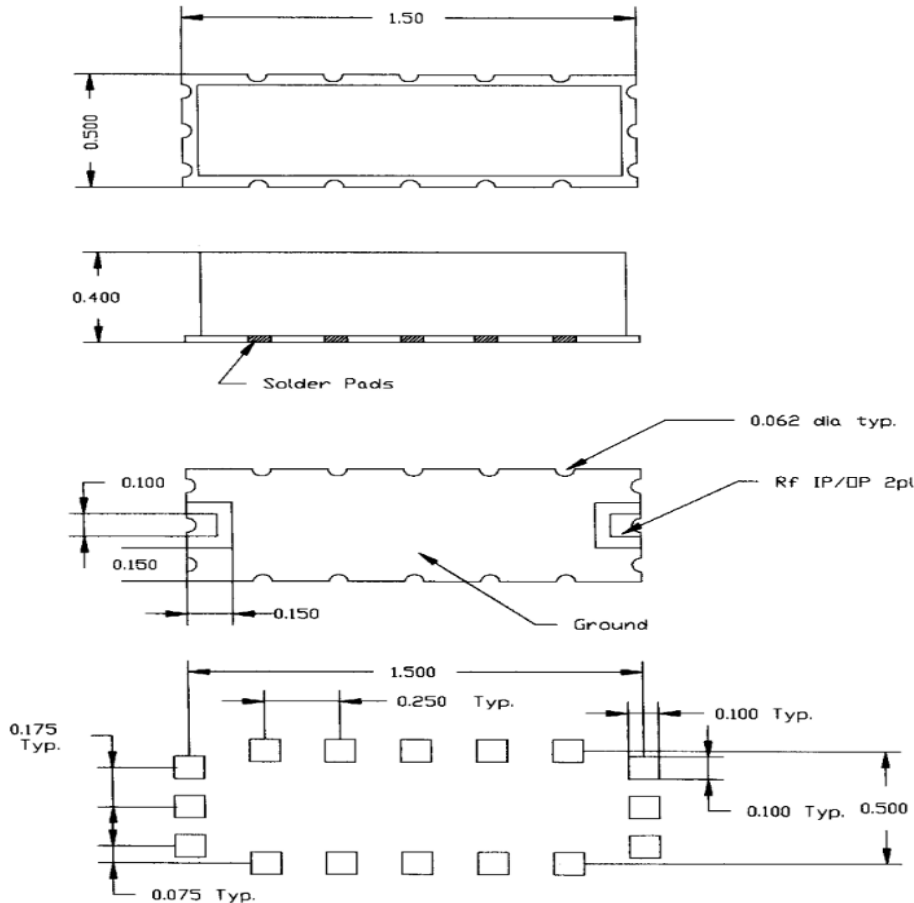
## Mechanical

**Mounting Method:** SMT  
**Dimensions:** 1.50" X 0.50" x 0.40"

## Environmental

**Operating Temperature:** -25°C to +70°C  
**Storage Temperature:** -55°C to +90°C  
**Shock:** 10 G. 11ms  
**Vibration:** 10 G. 5 to 200Hz

## Outline Drawing:



2 decimal places: +/-0.01 inches [+/- 0.3mm]

3 decimal places: +/- 0.005 inches [+/- 0.13mm]

Angles: +/- 1 Deg.

*When max dimensions are called out the above tolerances do not apply as long as it is under the max call out.*

**70 Outwater Lane Phone: (973) 772-4242**  
**Garfield, NJ 07026 Fax : (973) 321-3941**

**Email: [sales@anatechelectronics.com](mailto:sales@anatechelectronics.com)**  
**Web: [www.anatechelectronics.com](http://www.anatechelectronics.com)**



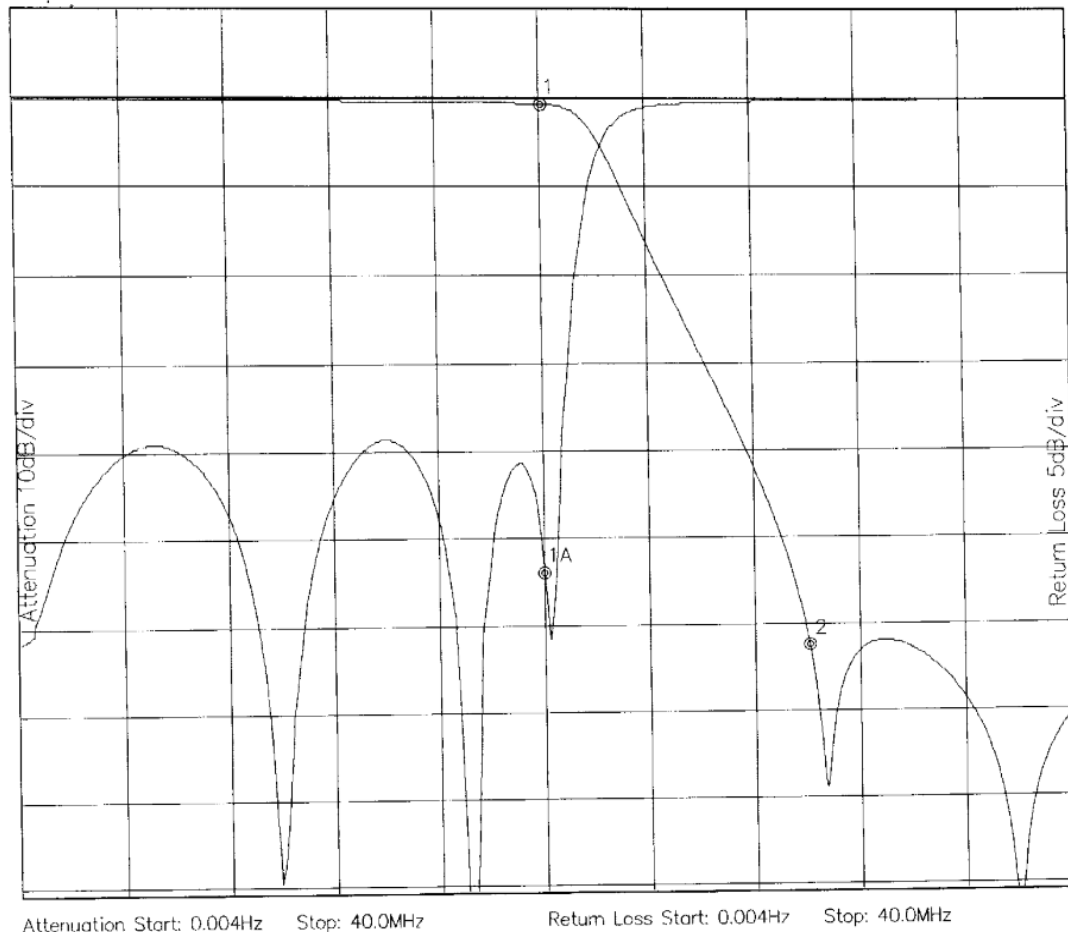
**ANATECH ELECTRONICS INC**  
RF & Microwave Filters & Products

# DC-20 MHz Lowpass Filter

**Part Number: AE20L8953**



## Response Plot:



Marker 1 Freq 20.032MHz Atten -0.630dB  
Marker 2 Freq 30.048MHz Atten -62.414dB

Marker 1A Freq 19.968MHz Ret Loss -26.919dB