



ANATECH ELECTRONICS INC
RF & Microwave Filters & Products

1090 MHz Ceramic Bandpass Filter

Part Number: AM1090B1181



Electrical specifications

Center Frequency: 1090 MHz
Bandwidth: 30 MHz min
VSWR: 1.5 : 1 max
Input / Output Impedance: 50 Ohms
Passband: 1075-1105 MHz
Passband Insertion Loss: 2.7 dB typ. (3.0 dB max)
Passband Ripple: 0.5 dB max
Rejection: 32 dBc min at Fo+/- 70 MHz
Rejection 2: 55 dBc min at 970 MHz
Rejection 3: 30 dBc min at 1030 MHz
Rejection 4: 43 dBc min at 1190 MHz
Power Handling: 5 watts

Mechanical

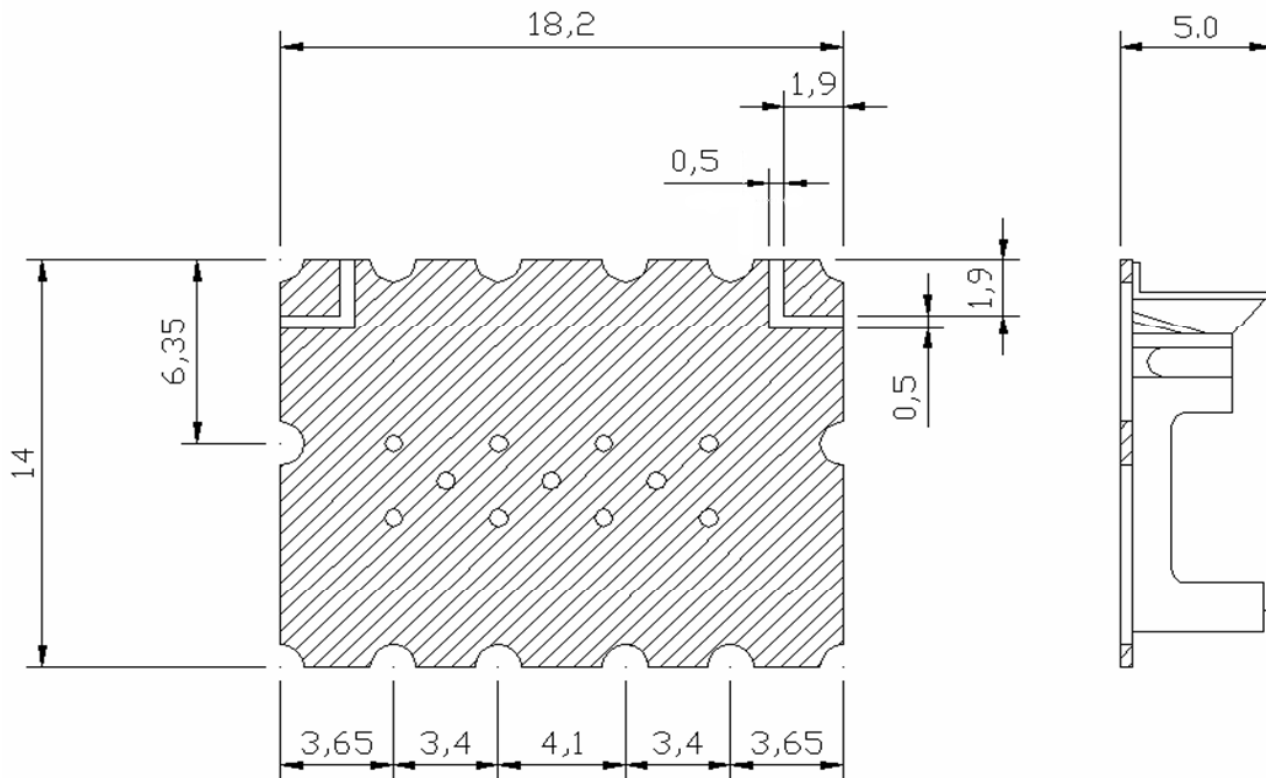
Mounting Method: SMT
Dimensions: 18.2 x 14 x 5 mm

Environmental

Operating Temperature: -40°C to 85°C
Storage Temperature: -50°C to +90°C

This product is RoHs compliant.

Outline Drawing:



Unit : mm
Tolerance : ± 0.3



Response Plot:

