



Electrical specifications

Center Frequency: 464 MHz
Bandwidth: 5 MHz
Input / Output Impedance: 50 Ohms
Passband: 461.5-466.5 MHz
Passband Insertion Loss: 1 dB
VSWR (input and output): 1.5:1
Rejection: 30 dB @ 400 MHz
Rejection 2: 70 dB @ 900-1200 MHz
Power Handling: 10 Watts

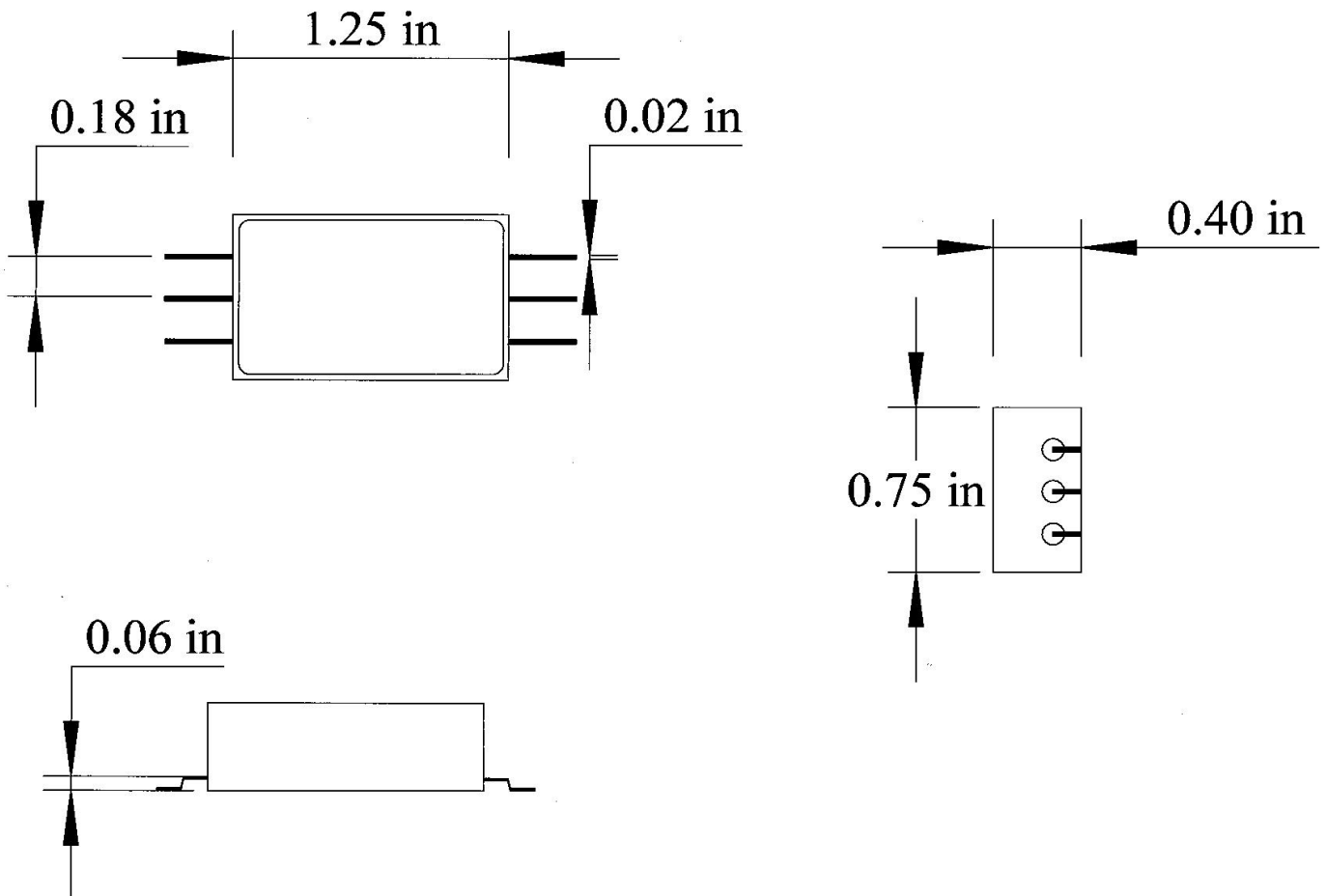
Mechanical

Dimensions: 1.25 x 0.75 x 0.4 inches

Environmental

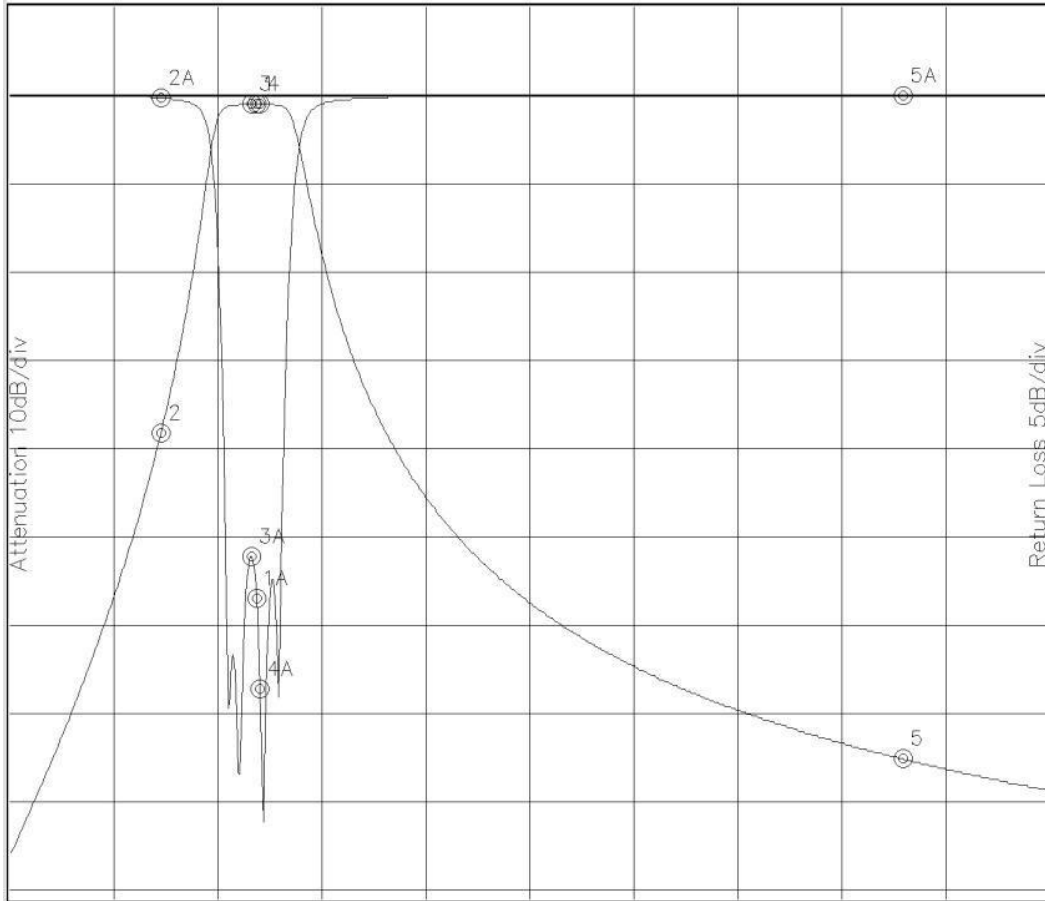
Operating Temperature: -45 to +85 deg.C
Storage Temperature: -55 to +95 deg.C
Shock: 20 G. 11ms
Vibration: 20 G. 5 to 200 MHz

Outline Drawing:





Response Plot:



Attenuation Start: 300.0MHz Stop: 1000.0MHz
 Marker 1 Freq 465.10MHz Atten -0.900dB
 Marker 2 Freq 400.64MHz Atten -38.000dB
 Marker 3 Freq 461.71MHz Atten -0.912dB
 Marker 4 Freq 467.36MHz Atten -0.897dB
 Marker 5 Freq 900.48MHz Atten -74.853dB

Return Loss Start: 300.0MHz Stop: 1000.0MHz
 Marker 1A Freq 465.10MHz Ret Loss -28.374dB
 Marker 2A Freq 400.64MHz Ret Loss -0.116dB
 Marker 3A Freq 461.71MHz Ret Loss -25.942dB
 Marker 4A Freq 467.36MHz Ret Loss -33.503dB
 Marker 5A Freq 900.48MHz Ret Loss 0.000dB