



Santek 7" High Bright HDMI Touchscreen Monitor

Description

The Santek 7" open frame touchscreen monitor SOF0700A1B-US provides users the ability to create integrated projects for leisure hobbyist projects and/or business use, with visual, audio and haptic experience. The 1024 x 600 display is a plug-n-play ready device. It connects to mini computers like raspberry Pi, PCs and other digital devices as a general HDMI monitor, via its mini HDMI port and gets power for display and 5 point multi-touch from its USB-C ports. This device is engineered with an exceptionally high bright display (600 cd/m²), and a variety of features and accessories.

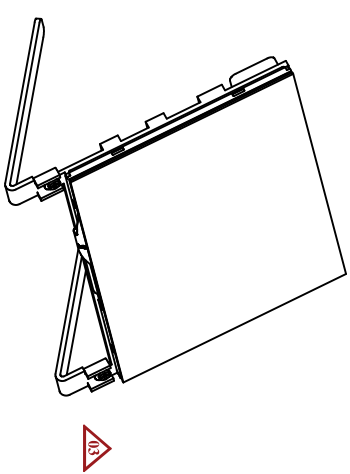
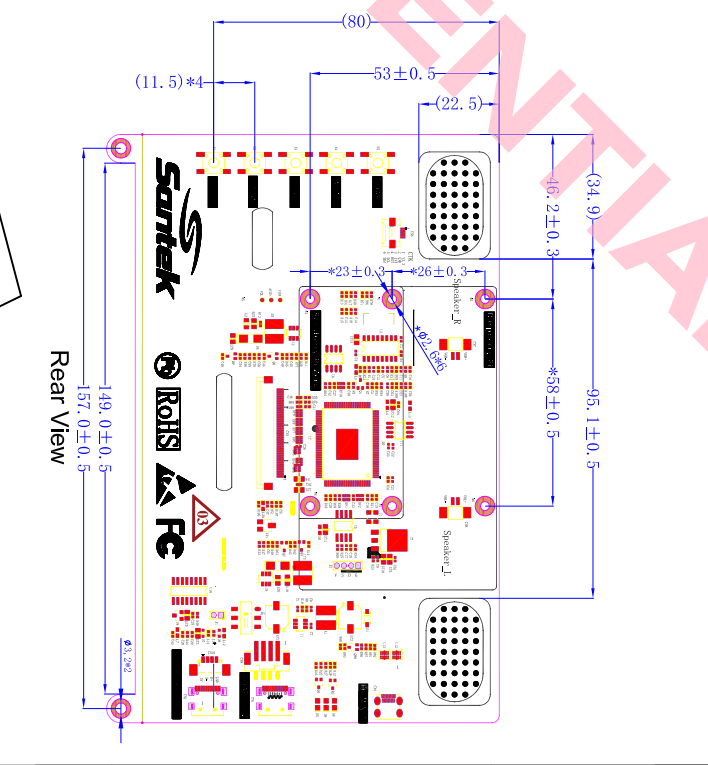
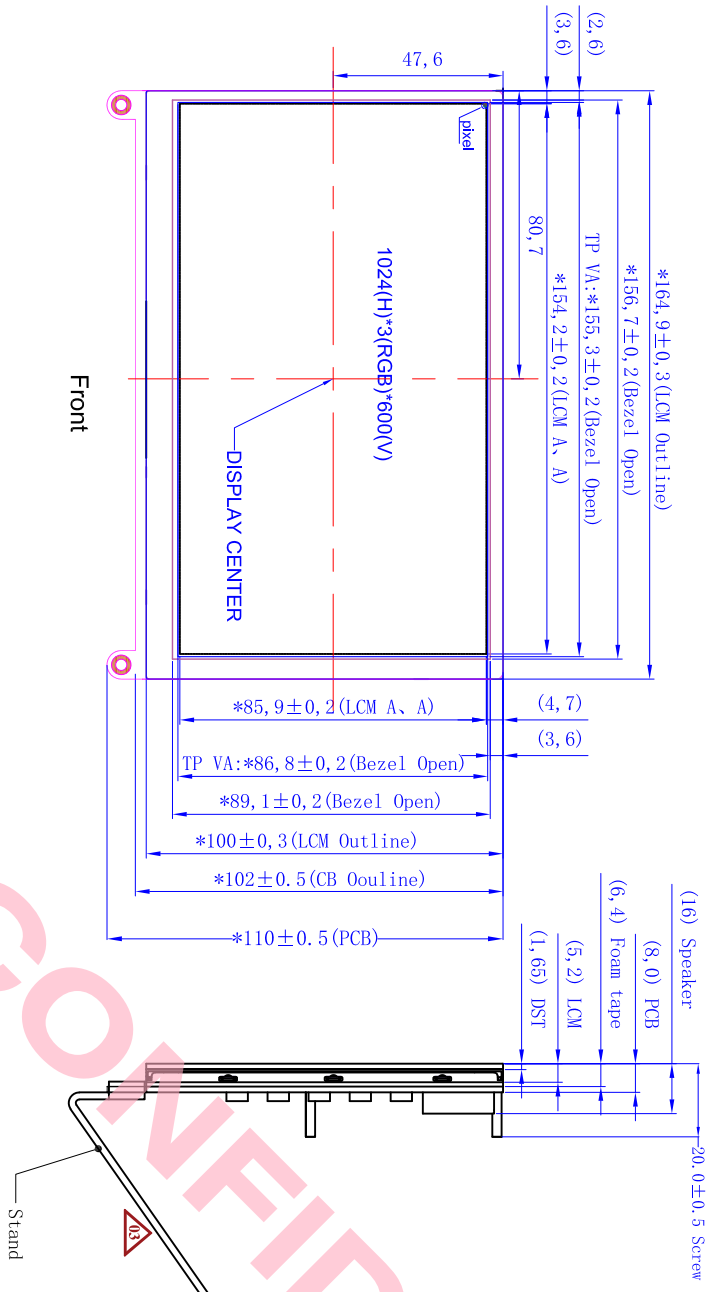


Key Features Comparison: Santek vs other market competitor products

Items	Particulars	Santek SOF0700A1B-US	The Raspberry Pi Touch Display	Other Products
Display	Resolution	1024*600	800*480	varies (800*480/ 1024*600)
	Display mode & viewing angle	IPS (Full viewing angle) 85/85/85/85	TN (narrow)	Varies: TN (narrow)/ IPS (Wide)
	Brightness (cd/m ²)	600 (Highest)	Not mentioned	Varies: 250-300
Other Features	Touch Screen	5 point touch	10 point touch	5 point touch
	OSD (On Screen Display) menu	✓	X	Varies (Mostly X)
	On board speaker(s)	2	X	Varies (0 or 2)
	Display signal port	mini-HDMI	DSI	mini-HDMI/ HDMI
	Power port (s)	USB type-C	GPIO	micro-USB
	Raspberry Pi back mounting	✓	✓	Varies (✓ / X)
	Mounting holes	✓	X	Varies (✓ / X)
	Plug-n-play?	✓	Requires physical installation	✓
Accessories	Stand set	Sturdy Metal stand	X	Varies (✓ / X)
	Raspberry PI mounting screw set	✓	✓	Varies (✓ / X)
	Cables	2x USB type-C to USB type A (for display/ touch power); 1x Hdmi- mini HDMI cable		Varies
	Housing	Will be available separately soon	X	Varies (Mostly X)

For technical enquiries, contact: cs@santek.us

REV 版本	DESCRIPTION 描述	DATE 日期
A01	FIRST ISSUE	APR-28-2021
A02	Structure Modify	MAY-16-2021
A03	Modify The Stand And LOGO	AUG-06-2021



- NOTE:**
- View Direction: 85 / 85 / 85 / 85.
 - Luminance 500cd/m² min, Center Brightness: 600cd/m² (Typ), Uniformity: 70% min.
 - CTP Main Parameters:
 - Structure: G+G.
 - Hardness: >6H.
 - CB Main Parameters.
 - Power In : USB TYPE-C Connector, Supply DC 5V/2A Power.
 - USB For Touch: Touch USB TYPE-C connector, Connect CTP with Mainboard.
 - HDMI : HDMI MINI Connector.
 - Speaker (2 Ohm / 8W).
 - Operating Temp.: -10°C~60°C.
 - Storage Temp.: -20°C~70°C.
 - RoHS Compliant.
 - "*" Key dimensions that must be inspected.

Santek San Technology, Inc.		SCALE: 1:1
Title: 7 INCH MONITOR		SHEET: 1 OF 1
PARTS NUMBER: SOF0700A1B_A03	GENERAL TOL: ±0.3	UNIT: mm
PARTS CODE: 200000812	DATE: 2021.08.11	DATE: 2021.08.11
DRAWING NO: 图号:	CHK: Park Zhou Andy	DATE: 2021.08.09
	DWYN: wei hui feng	DATE: 2021-08-06