



Maxim > Design Support > Technical Documents > Application Notes > Digital Potentiometers > APP 3317
Maxim > Design Support > Technical Documents > Application Notes > General Engineering Topics > APP 3317
Maxim > Design Support > Technical Documents > Application Notes > Interface Circuits > APP 3317

Keywords: AN3315, AN3230, Windows, NT, XP, 2000

APPLICATION NOTE 3317

Adding Windows NT/2000/XP Support to the AN3315 Parallel-Port 2-Wire Software

Oct 05, 2004

Abstract: This application note is a supplement to two previous application notes, which effectively extend the usage of the parallel-port, 2-wire hardware (presented in AN3230) and software (presented in AN3315) to computers operating on Windows® NT/2000/XP platforms.

Introduction

A common problem with the Windows NT/2000/XP operating systems (OS) is that they require drivers to access the parallel port, which often makes parallel-port software written for Windows 95/98 incompatible. A solution to get around this OS restriction is to purchase a third-party driver that allows an existing Windows 95/98 parallel-port programs to operate on a Windows NT/2000/ XP platform without modification.

Direct I/O® is shareware software, which is available for download from the Direct I/O website (<http://www.direct-io.com>). As of the time this application note was written, Direct I/O offered a 30-day trial period. However, see the Direct I/O website for their present terms and conditions of use. Dallas Semiconductor accepts no liability for any damages that may be caused by the using the Direct I/O software.

The AN3315 parallel-port, 2-wire software presented in this application note is free and available "as is" for use by our customers. Dallas Semiconductor accepts no liability for any damages the software may cause. Use the software at your own risk.

Using Direct I/O to Operate the AN3315 Parallel-Port 2-Wire Software on Windows NT/2000/XP

The following instructions can be used to install Direct I/O and configure it for use with the Dallas Semiconductor parallel-port, 2-wire software.

1. Download the Dallas Semiconductor parallel-port, 2-Wire software from our ftp (http://files.dalsemi.com/system_extension/AppNotes/AN3315/) and save it to the hard disk.
2. Download Direct I/O from <http://www.direct-io.com> and install it using the typical installation settings. This installation will require administrative privileges to complete.
3. Once Direct I/O is installed, start the Direct I/O control panel (**Figure 1**) from the start menu.
4. On the I/O Ports tab of the control panel, enter "378" in the Begin box and "37A" in the End box,

and press the Add button to add a new I/O port range. These are the begin and end memory addresses of the I/O port range for LPT1. To run ParDS2W.exe on a different parallel port, the begin and end addresses will have to be modified to match the address of the parallel port that will be utilized.

5. Click on the Security tab, then click the Browse button and navigate to the location where ParDS2W.exe was saved on the hard disk. Highlight "ParDS2W.exe" with the mouse and click the Open button. This will show the path and application name (e.g. C:\ParDS2W.exe) in the edit box below the Allowed Processes title. Next, click the Add button to add ParDS2W.exe to the list box below.
6. Click the OK button at the bottom of the control panel dialog to accept the configuration and close the control panel.
7. Start the ParDS2W.exe application (**Figure 2**), which will now operate as it would normally on a Windows 95/98 computer.

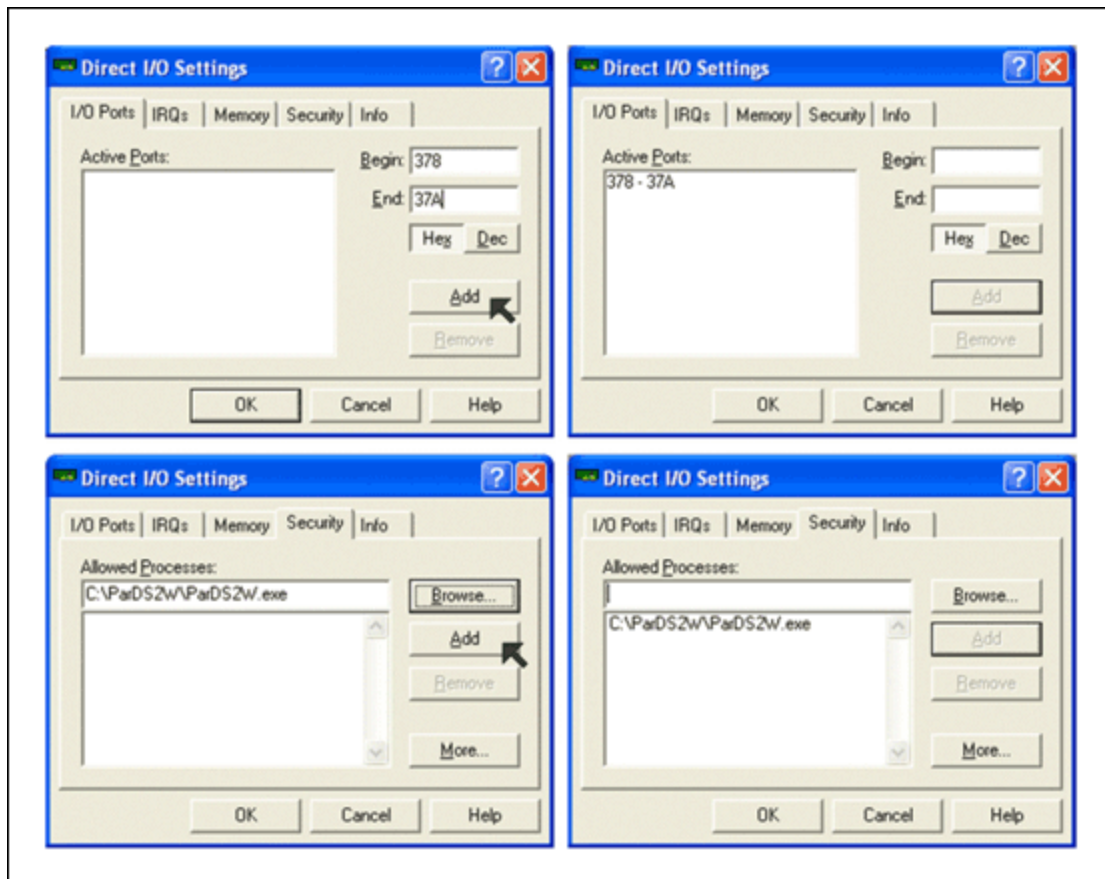


Figure 1. Configuring Direct I/O to Work with ParDS2W.exe.

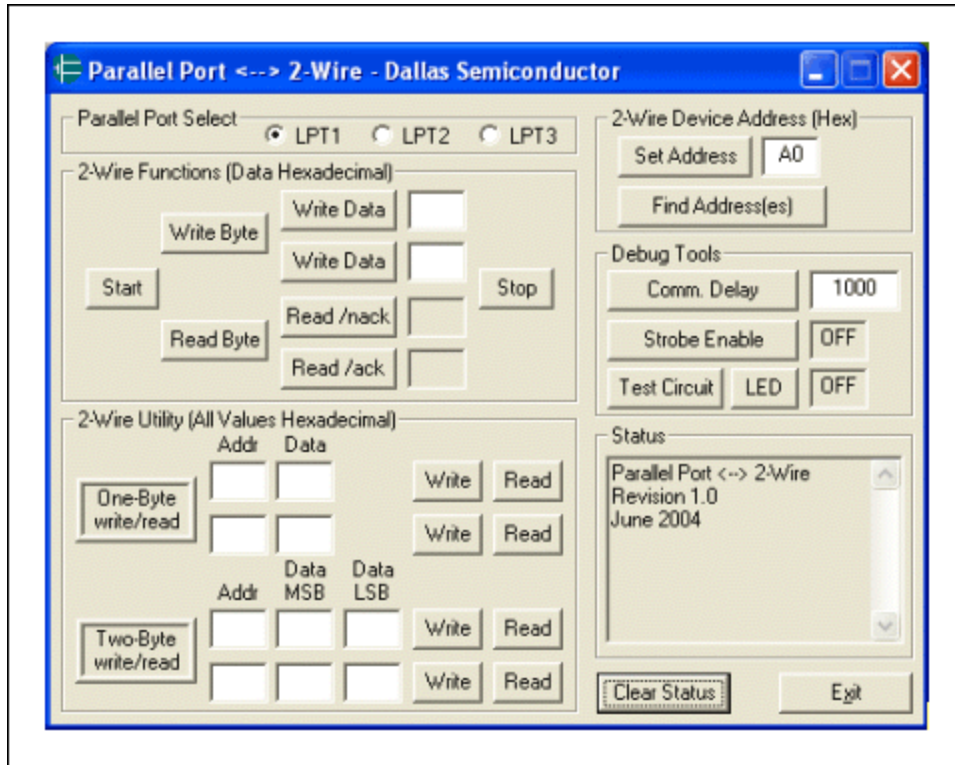


Figure 2. Parallel-Port, 2-Wire software running on Windows XP.

Conclusion

Direct I/O is a third-party shareware application that can be used to run parallel-port applications written for Windows 95/98 on Windows NT/2000/XP computers. This application note shows the steps required to install Direct I/O and configure it for the ParDS2W.exe application. This allows customers using any modern Windows OS to use the hardware circuit described in AN3230 to communicate with Dallas Semiconductor 2-wire products using the parallel-port, 2-wire software. For more information about the parallel-port, 2-wire software, please refer to AN3315.

Related Parts

DS1077	EconOscillator™/Divider	Free Samples
DS1085	EconOscillator Frequency Synthesizer	Free Samples
DS1086	Spread-Spectrum EconOscillator	Free Samples
DS1803	Addressable Dual Digital Potentiometer	Free Samples
DS1805	Addressable Digital Potentiometer	Free Samples
DS1807	Addressable Dual Audio Taper Potentiometer	Free Samples
DS1844	Quad Digital Potentiometer	Free Samples
DS1845	Dual NV Potentiometer and Memory	Free Samples

DS1846	NV Tri-Potentiometer, Memory and MicroMonitor	Free Samples
DS1855	Dual Nonvolatile Digital Potentiometer and Secure Memory	Free Samples
DS1858	Dual Temperature-Controlled Resistors with Three Monitors	Free Samples
DS1859	Dual, Temperature-Controlled Resistors with Internally Calibrated Monitors	Free Samples
DS1870	LD MOS RF Power-Amplifier Bias Controller	Free Samples
DS3903	Triple 128-Position Nonvolatile Digital Potentiometer	Free Samples
DS3904	Triple, 128-Position, Nonvolatile, Variable, Digital Resistor/Switch	Free Samples

More Information

For Technical Support: <http://www.maximintegrated.com/support>

For Samples: <http://www.maximintegrated.com/samples>

Other Questions and Comments: <http://www.maximintegrated.com/contact>

Application Note 3317: <http://www.maximintegrated.com/an3317>

APPLICATION NOTE 3317, AN3317, AN 3317, APP3317, Appnote3317, Appnote 3317

Copyright © by Maxim Integrated Products

Additional Legal Notices: <http://www.maximintegrated.com/legal>