

Customer Information Notification

2022030101

Dear Tracy Hoglin,

Here is your personalized quality information concerning products our customers and partners purchased from Ampleon.

For detailed information we invite you to [view this notification online](#)

Issue Date:

31/03/2022

Effective Date:

01/04/2022

Management Summary**Change Category**

- | | | | |
|--|---|---|--|
| <input type="checkbox"/> Wafer Fab process | <input type="checkbox"/> Assembly Process | <input type="checkbox"/> Product Marking | <input type="checkbox"/> Design |
| <input type="checkbox"/> Wafer Fab materials | <input type="checkbox"/> Assembly Materials | <input type="checkbox"/> Electrical spec./Test coverage | <input type="checkbox"/> Mechanical Specification |
| <input type="checkbox"/> Wafer Fab location | <input type="checkbox"/> Assembly Location | <input type="checkbox"/> Test Location | <input type="checkbox"/> Packing/Shipping/Labeling |

Temporary use of alternative box

Information Notification

Due to a supply issue at the box supplier an alternative box is used until end of April 2022. This alternative box has exactly the same specification as original box. Only difference is the Dry Pack logo. On the alternative box the Dry Pack logo is missing. As solution a sticker with Dry Pack logo will be placed at the original location of the Dry Pack logo. See also supporting presentation in the ePCN tool.

Why do we issue this Information Notification

To inform the customer of the visible difference between a printed Dry Pack logo and the Dry Pack logo sticker.

Identification of affected Products

Product identification does not change

Impact**Data Sheet Revision**

No impact to existing datasheet

Disposition of Old Products

not applicable

Additional information

Affected products, sales history information as well as self qualification / additional documents can be accessed here: [view online](#)

Remarks**Contact and Support**

For all inquiries regarding the ePCN tool application or access issues, please contact [Ampleon "Quality Support Team"](#).

For all Quality Notification content inquiries, please contact your local Ampleon Sales Support team.

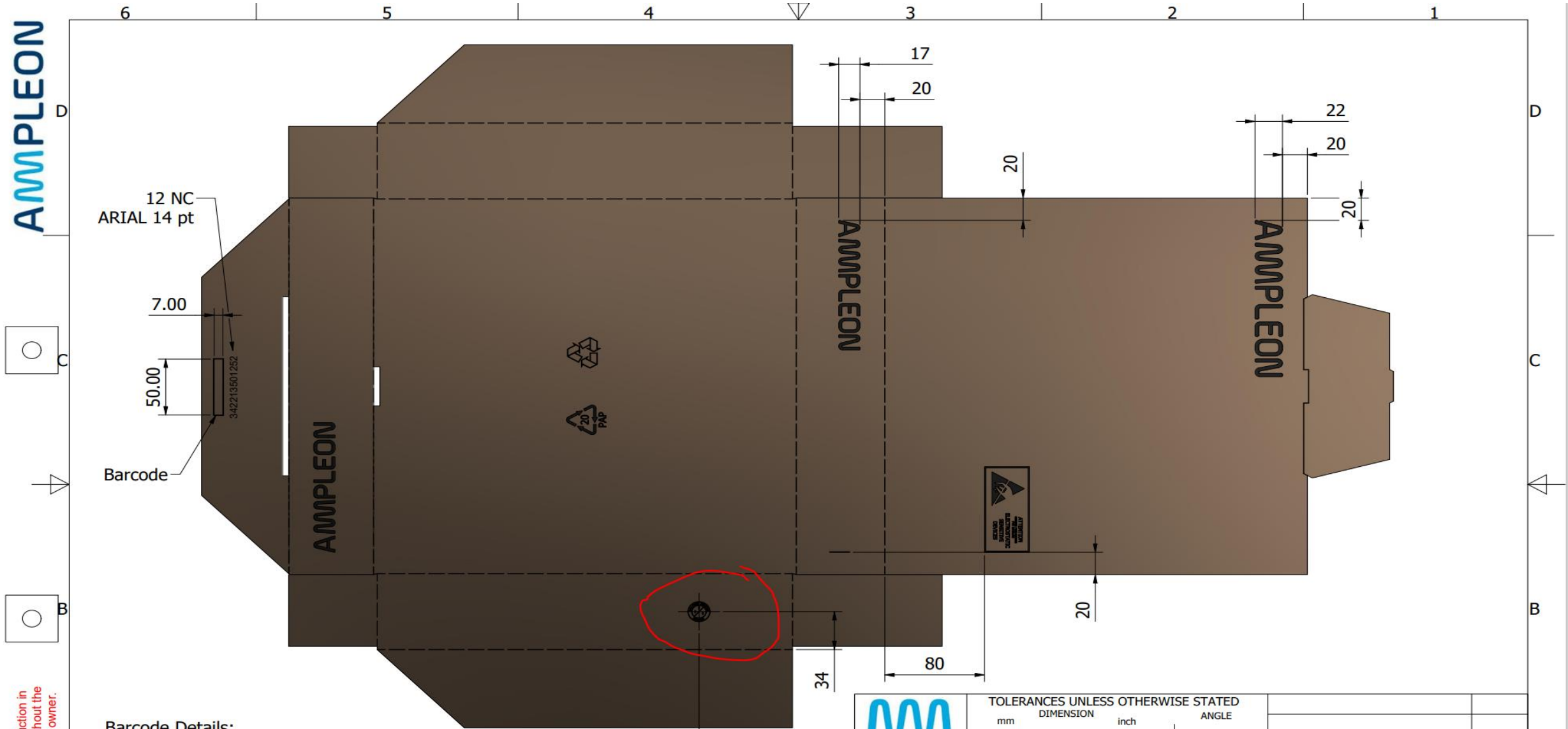
For specific questions on this notice or the products affected please contact our specialist directly:

Name Hans Buis
Position Process Improvement Manager
E-mail address hans.buis@ampleon.com

At Ampleon we are dedicated to creating optimal value for our customers.
 Ampleon Quality Management Team.

342213501252_Printed Box 330x56

AMPLEON



12 NC
ARIAL 14 pt

7.00

50.00

Barcode

342213501252

AMPLEON



AMPLEON

AMPLEON

17
20

20

22
20

20

20


34

80

75

Barcode Details:
12NC fonts: Arial
Parallel to 12NC and 5 mm above
CODE 39
50 mm x 7 mm

reserved. Reproduction in
it is prohibited without the
of the copyright owner.

 Amplify the future		TOLERANCES UNLESS OTHERWISE STATED		
		mm	DIMENSION	inch
		±0.5		±1°
GENERAL ROUGHNESS		UNIT		MATERIAL
3.2		mm [inch]		
SCALE		PROJECTION		TREATMENT
				CORRUGATED FIBREBOARD
				PATTERN No. / Model No.
				ASSEMBLY NUMBER QTY.
				OEM REF. DATA

Placing Dry Pack logo sticker on alternative PQ box, placed exactly on same position where printed logo is located.



Alternative box with Dry Pack logo sticker

Original box with printed Dry Pack logo