

TYPICAL INDICATOR ORDERING EXAMPLE

P01

12

C

1

A

Lamps	
Incandescent	
06	6-volt
12	12-volt
18	18-volt
24	24-volt
28	28-volt
Neon	
N	110-volt

Cap Colors	
B	White
C	Red
D	Orange
E	Yellow
*F	Green
*G	Blue

*F & G not suitable with neon.

Bezels	
1	.787" (20.0mm) Wide
2	.937" (23.8mm) Wide

Bezel Colors	
A	Black
B	White
C	Red
D	Orange
E	Yellow
F	Green
G	Blue
H	Gray

DESCRIPTION FOR TYPICAL ORDERING EXAMPLE

P01-12-C-1A



LAMP CODES & SPECIFICATIONS

Incandescent & Neon Lamps for Solid & Design Caps

AT602 Incandescent	AT602N Neon	$L(+)$ $L(-)$	06	12	18	24	28	N		
			Voltage	6V	12V	18V	24V	28V	110V	
			Current	80mA	50mA	35mA	25mA	22mA	1.5mA	
			MSCP	.159	.215	.398	.215	.247	NA	
			Endurance	Hours					2,000 Average	15,000 Avg.
			Ambient Temperature Range						-10° ~ +50°C	
T-1 1/2 Pilot Slide Base			Recommended Resistor for Neon: 33K ohms for 110V AC & 100K ohms for 220V AC							

Electrical specifications are determined at a basic temperature of 25°C.

For dimension drawings of lamps, see Accessories & Hardware Index.

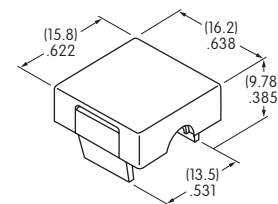
If the source voltage is greater than rated voltage, a ballast resistor is required.

The ballast resistor calculation and more lamp detail are shown in the Supplement section.

CAP COLORS

B White	D Orange	F Green
C Red	E Yellow	G Blue

AT429



Material: Polycarbonate

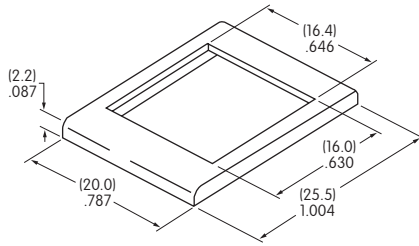
Finish: Glossy

F & G not suitable for neon

OPTIONAL BEZELS & COLORS

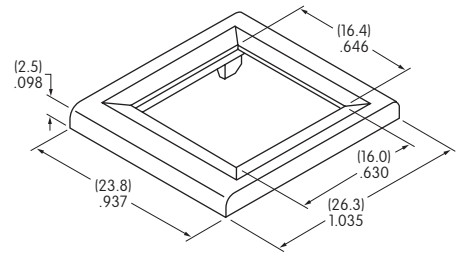
- 1A** **1E**
- 1B** **1F**
- 1C** **1G**
- 1D** **1H**

AT204
.787" (20.0mm) Wide Bezel



- 2A** **2E**
- 2B** **2F**
- 2C** **2G**
- 2D** **2H**

AT9201
.937" (23.8mm) Wide Bezel



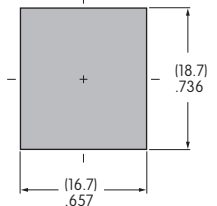
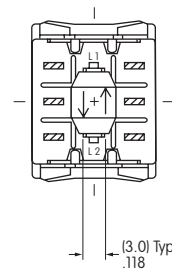
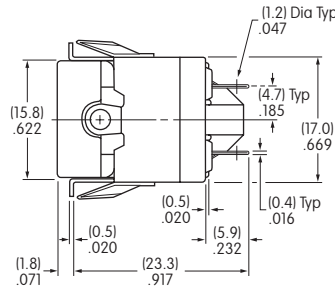
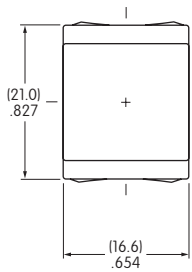
Material: Polycarbonate

Standard Finish: Glossy

Color Codes: **A** Black **B** White **C** Red **D** Orange **E** Yellow **F** Green **G** Blue **H** Gray

TYPICAL INDICATOR DIMENSIONS

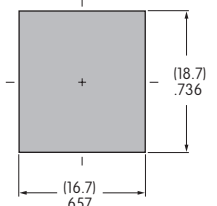
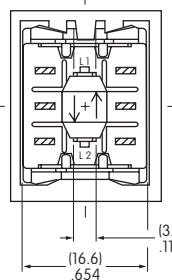
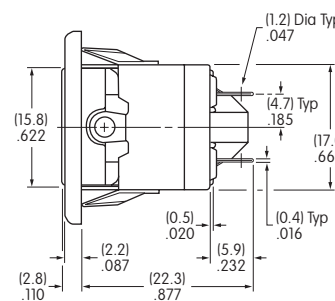
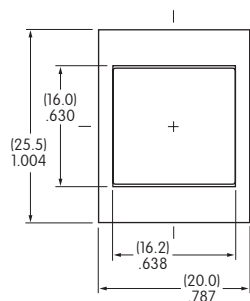
Without Bezel



Panel Thickness:
 .039" ~ .157"
 (1.0mm ~ 4.0mm)

P01-12-C

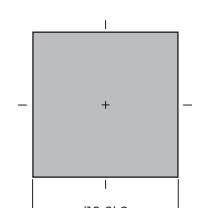
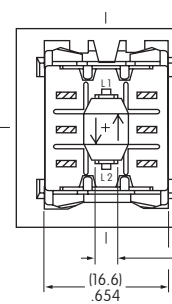
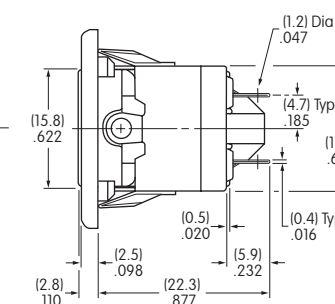
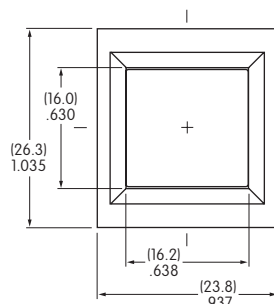
With Bezel



Panel Thickness:
 .039" ~ .157"
 (1.0mm ~ 4.0mm)

P01-12-C-1A

With Large Bezel



Panel Thickness:
 .039" ~ .157"
 (1.0mm ~ 4.0mm)

P01-12-C-2A

Toggles
Rockers
Pushbuttons
Illuminated PB
Programmable
Keylocks
Rotaries
Slides
Tactiles
Tilt
Touch
Indicators
Accessories
Supplement