



The Connor-Winfield Corporation  
2111 Comprehensive Drive  
Aurora, Illinois 60505  
Phone: (630) 851-4722  
Fax: (630) 851-5040  
<http://www.conwin.com>

## PRODUCT/ PROCESS CHANGE NOTICE

**Number:** 2123-1  
**Date:** 12/08/21  
**ECO#:** 11957, 11960, 11963, and 11965  
**ECO Ref.: Class:** 3

**Effective Date:** Starting implementation as soon as 12/15/21

---

**Change Category:** Change in Existing Product Design/Component Parts

**Change Description:** Change in OCXO circuit design topology to a smaller footprint OCXO mounted on a carrier board to maintain the same form factor.

**Reason for Change:** Due to the end-of-life status of some existing semiconductor components (analog compensation IC's), we are changing the design to a more available version.

**Products Affected:**

DOC020F-010.0M  
DOCSC012F-010.0M  
DOCAT050F-010.0M  
DOCAT052F-010.0M

**Effect on Product Performance:** In all models, equal or improved performance has been noted with no degradations.

**Effect on Product Physical Appearance:**

**DOCSC012F-010.0M:** no change

**DOCAT050F-010.0M:** height increase from 0.307" to 0.330"

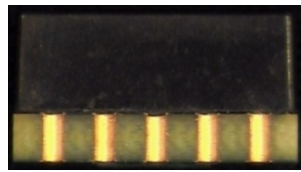
**DOCAT052F-010.0M:** no change

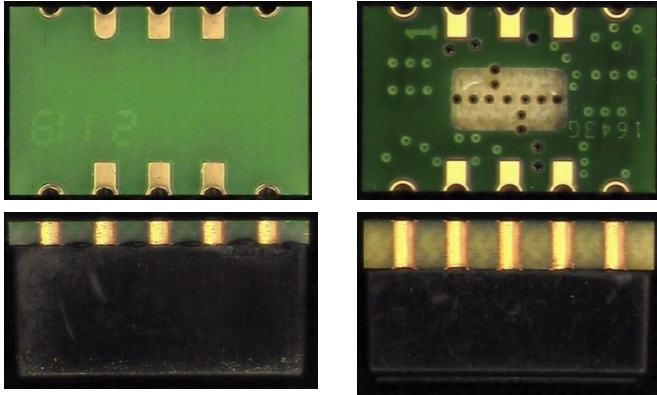
**DOC020F-010.0M:** The new parts have a thinner PCB with no cut-out on the bottom. The landing pattern and overall dimensions remain the same.

New Version:



Old Version:





**Change Impact:** Product model number will remain the same.

**CHANGEOVER PROCESS:** The implementation of the design change will be pending available inventory, so please contact the factory for specific details for each model.

**Test SAMPLES Available:**  Yes  No

**Test DATA Available:**  Yes  No

**Connor-Winfield Contact Person:** Ken Olp, Engineering Mgr 630-851-4722 Ext 5511,  
kolp@conwin.com

### **CUSTOMER RESPONSE**

This PCN requires customer notification only. Please use this form if necessary to respond and direct to the attention of the contact person at Connor-Winfield Corporation.

If Unacceptable, Explain:

Customer Contact:

Telephone:

Email

---