



Electrical specifications

Center Frequency: 1575 MHz
Bandwidth: 2 MHz
Input / Output Impedance: 50 Ohms
Passband: 1574.4-1576.4 MHz
Passband Insertion Loss: 1574.4-1576.4 MHz 1.0 dB
Passband Ripple: 1.8 dB max
VSWR: 1.5:1 Max
Rejection: 1525.4 MHz 17.0 dB min
Rejection 2: 1625.4 MHz 17.0 dB min
Power Handling: 5 W

Mechanical

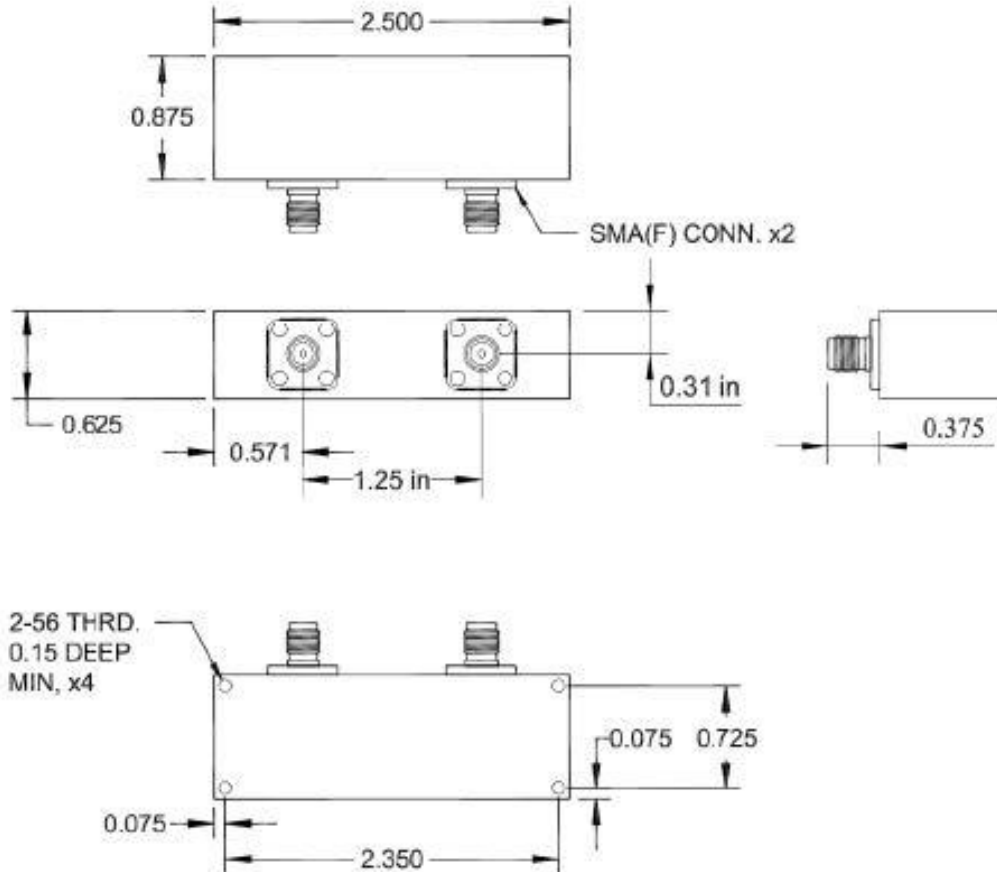
Mounting Method: Threaded Mounting Holes
Connector Type: SMA (F)
Dimensions: 2.50 x 0.875 x 0.625 Inches

Environmental

Operating Temperature: -40°C to +85°C
Storage Temperature: -50°C to +90°C

This product is RoHs compliant.

Outline Drawing:





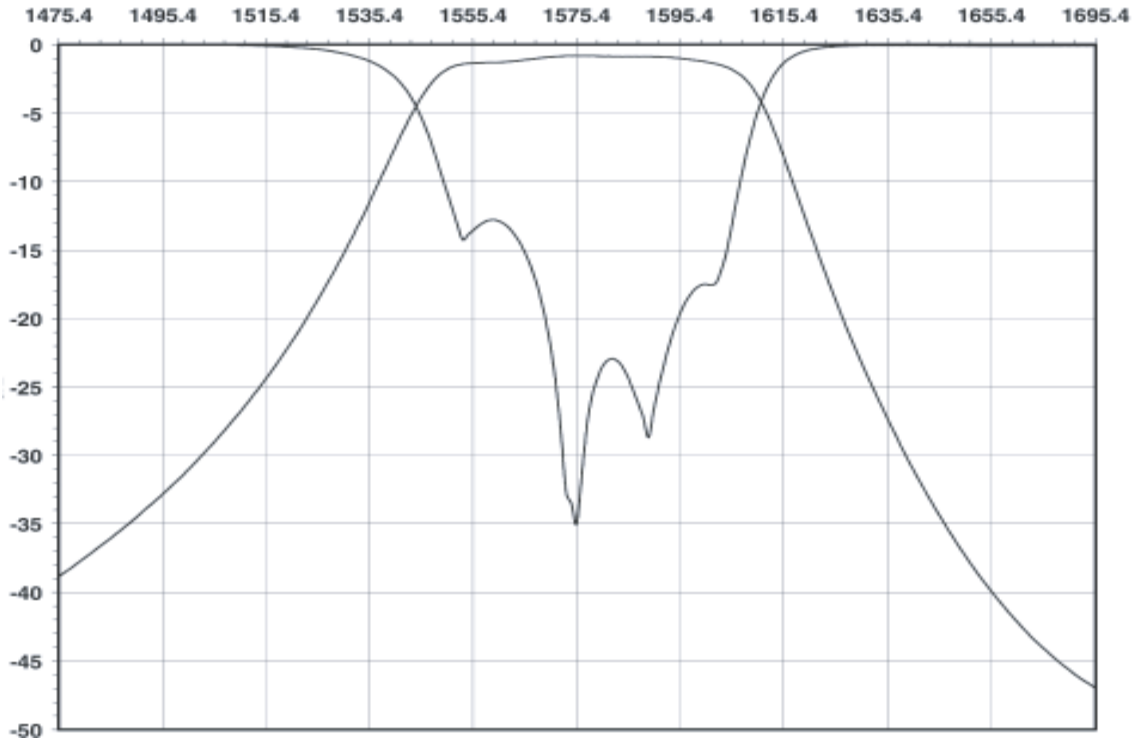
ANATECH ELECTRONICS INC
RF & Microwave Filters & Products

GPS Ceramic BPF

Part Number: AM1575B316



Response Plot:



Available at our Web store:

70 Outwater Lane Phone: (973) 772-4242
Garfield, NJ 07026 Fax : (973) 772-4646



Email: sales@anatechelectronics.com
Web: www.anatechelectronics.com