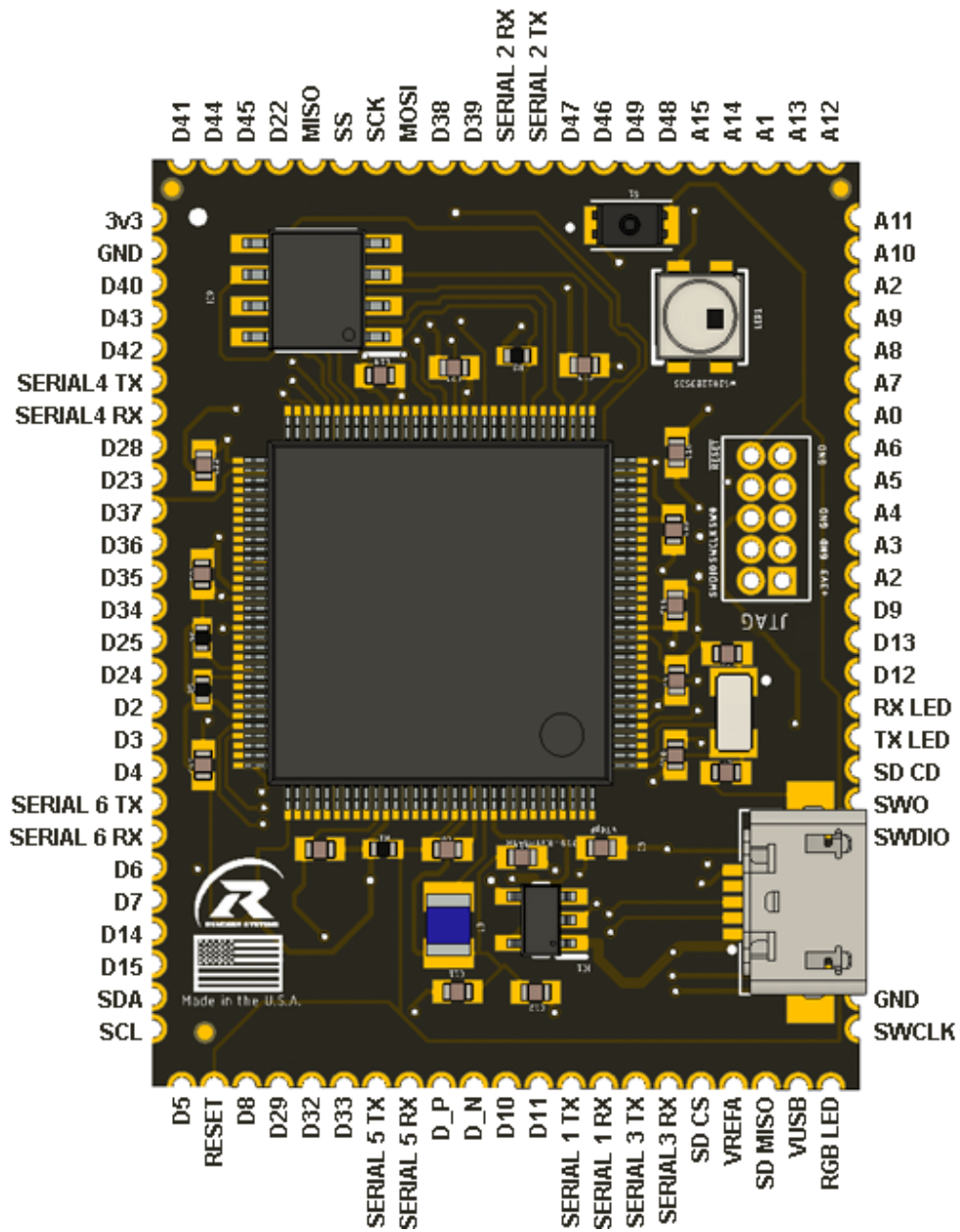


Rendeer Systems RSD51M200 Module

- Microchip ATSAM51P20A ARM® Cortex® M4 core running at 120 MHz
- [Floating point support with Cortex M4 DSP instructions](#)
- 1MB flash, 256 KB RAM
- 32-bit, 3.3V logic and power
- 70 GPIO pins in total
- Dual 1 MSPS DAC (A0 and A1)
- Dual 1 MSPS ADC (15 analog pins)
- 8 x hardware SERCOM (can be I2C, SPI or UART)
- 22 x PWM outputs
- Built in crypto engines with AES (256 bit), true RNG, Pubkey controller
- Logic level is 3.3V
- Onboard RGB LED (Neopixel compatible)
- Native USB, there's no need for a hardware USB to Serial converter when used to as a serial device, the USB interface can be used by any computer to send/receive data to the RSD51M200 and can also be used to launch and update code via the bootloader. It can also act like an HID keyboard or mouse.



## TECHNICAL DETAILS

Product Dimensions: 37.5mm x 27.75mm x 3.56mm / 1.476378" x 1.1" x 0.14"



<https://www.rendeesys.com>