

Light is OSRAM

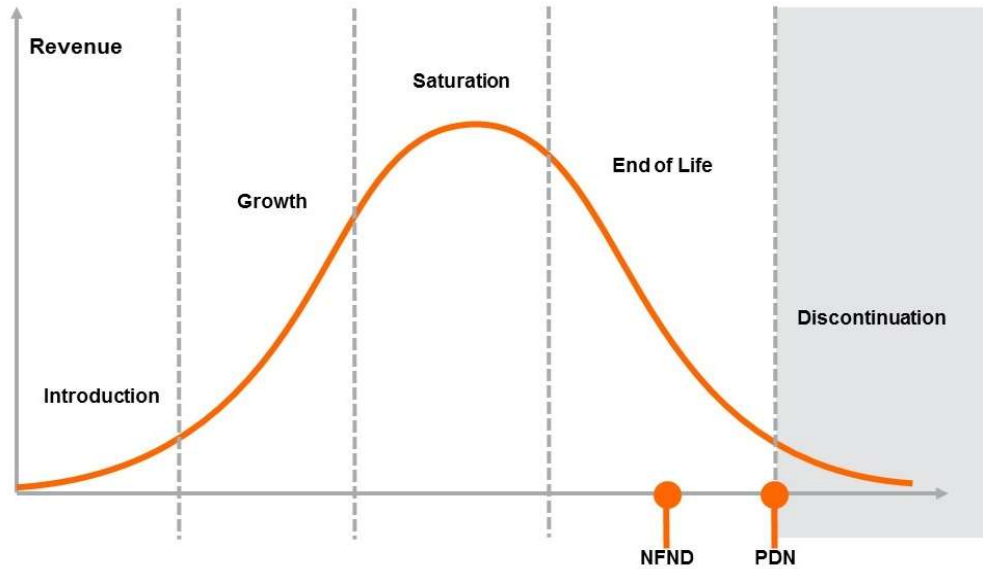
Product Or Individual Q-Code Discontinuation (acc. JEDEC J-STD-048)  
OS-PDN-2019-060

1-Nov-2019

---

**Last order:** 01 June 2020  
**Last delivery:** 01 November 2020

---



Please direct your feedback to your local Sales office.

DISCONTINUED				NEW (REPLACEMENT)		
Device	Ordering Code	Brand	Reason for discontinuation	Device	Datasheet Ordering Code	Brand
LS T676-N1P2-1-0-10-R33-Z-HAR	Q65110A3301	TOPLED	No sufficient future volume forecast	LS T676-P2S1-1-0-20-R18-Z	Q65110A2153	TOPLED
LY T68F-U2V1-5-1-20-R18-Z-XX	Q65110A9291	TOPLED	Brightness increase – dim selections need to be phased-out	LY T68F-V1AA-46-1-20-R18-Z	Q65110A7322	TOPLED
LCW G6CP-DBEA-6R7T-0-140-R18-LM	Q65111A0060	Advanced Power TOPLED	No sufficient future volume forecast	LCW G6CP-EAFB-4R9T-0-140-R18-Z	Q65112A9762	Advanced Power TOPLED
LCW G6CP-DAFA-4R9T-0-140-R18-Z	Q65111A0079	Advanced Power TOPLED	Brightness increase – dim selections need to be phased-out	LCW G6CP-EAFB-4R9T-0-140-R18-Z	Q65112A9762	Advanced Power TOPLED
LCW G6CP-DAFA-4U9X-0-140-R18-Z	Q65111A0080	Advanced Power TOPLED	Brightness increase – dim selections need to be phased-out	LCW G6CP-DBFA-4U9X-0-140-R18-Z	Q65112A9758	Advanced Power TOPLED
LCW G6CP-DAFA-4J8K-0-140-R18-Z	Q65111A0081	Advanced Power TOPLED	Brightness increase – dim selections need to be phased-out	LCW G6CP-EAFB-4J8K-0-140-R18-Z	Q65112A9759	Advanced Power TOPLED
LCW G6CP-DAFA-4L8N-0-140-R18-Z	Q65111A0082	Advanced Power TOPLED	Brightness increase – dim selections need to be phased-out	LCW G6CP-EAFB-4L8N-0-140-R18-Z	Q65112A9760	Advanced Power TOPLED
LCW G6CP-DAFA-4O9Q-0-140-R18-Z	Q65111A0083	Advanced Power TOPLED	Brightness increase – dim selections need to be phased-out	LCW G6CP-EAFB-4O9Q-0-140-R18-Z	Q65112A9761	Advanced Power TOPLED
LW ETSG-AABB-JKPL-1-30-R18-Z	Q65111A0196	Power TOPLED	Brightness increase – dim selections need to be phased-out	LW ETSG-ABCA-JKPL-1-30-R18-Z	Q65112A9743	Power TOPLED
LY T67F-U1U2-35-1-20-R18-Z	Q65111A2423	TOPLED	Brightness increase – dim selections need to be phased-out	LY T67F-U1AA-36-1-20-R18-Z	Q65110A9231	TOPLED
LA B6SP-CBEA-24-1-140-R33-Z	Q65111A3297	Power SIDELED	Brightness increase – dim selections need to be phased-out	LA B6SP-EAFB-24-G3R3-140-R33-Z	Q65112A9519	Power SIDELED
LY T67F-U2-4-1-20-R18-Z-BP	Q65111A4030	TOPLED	Brightness increase – dim selections need to be phased-out	LY T67F-U1AA-36-1-20-R18-Z	Q65110A9231	TOPLED
LB T673-H1K2-24-1-2-R18-Z	Q65111A5140	TOPLED	identical	LB T673-H1K2-24-1-2-R18-Z	Q65112A2738	TOPLED
LA B6SP-DAEA-24-1-140-R33-Z	Q65111A5230	Power SIDELED	Brightness increase – dim selections need to be phased-out	LA B6SP-EAFB-24-G3R3-140-R33-Z	Q65112A9519	Power SIDELED
LO A67F-AAAB-3-1-30-R33-Z-DL	Q65111A5348	SIDELED	Brightness increase – dim selections need to be phased-out	LO A67F-ABCA-24-E3P3-30-R33-Z	Q65112A9514	SIDELED
LY T68F-U2V1-56-1-20-R18-Z	Q65111A5349	TOPLED	Brightness increase – dim selections need to be phased-out	LY T68F-V1AA-46-1-20-R18-Z	Q65110A7322	TOPLED
LO T67F-V2-34-1-20-R18-Z-BP	Q65111A5656	TOPLED	Brightness increase – dim selections need to be phased-out	LO T67F-V1AB-24-1-20-R18-Z	Q65110A9230	TOPLED

DISCONTINUED				NEW (REPLACEMENT)		
Device	Ordering Code	Brand	Reason for discontinuation	Device	Datasheet Ordering Code	Brand
LY G6SP-DAEA-45-3B4B-140-R18-Z-APA	Q65111A5878	Advanced Power TOPLED	No sufficient future volume forecast	LCY G6SP-CBEA-5E-47-140-R18-Z	Q65112A3666	Advanced Power TOPLED
LY M67F-U2-4-1-20-R18-Z-BP	Q65111A6911	Mini TOPLED	Brightness increase – dim selections need to be phased-out	LY M67F-T2V2-36-1-20-R18-Z	Q65110A8980	Mini TOPLED
LA B6SP-DBEA-24-1-140-R33-Z-XX	Q65111A8491	Power SIDELED	Brightness increase – dim selections need to be phased-out	LA B6SP-EAFB-24-G3R3-140-R33-Z	Q65112A9519	Power SIDELED
LE UW T1A5 01-6R8R-ebxD46ebzB46-T01-LM	Q65111A8521	OSRAM OSTAR	Brightness increase – dim selections need to be phased-out	KW H5L531.TE-Z7R7-ebvFcbB46-RS5R	Q65112A4051	OSLON
LW A673-Q2R1-HKK-0-10-R33-VI	Q65111A9974	SIDELED	No sufficient future volume forecast	LW A6SG-V2BA-FK0PN0-0-20-R33-Z	Q65112A1366	SIDELED
LE UW T1A5 01-6R7R-ebxD46-T01-LM	Q65112A1671	OSRAM OSTAR	Brightness increase – dim selections need to be phased-out	KW H5L531.TE-Z7R7-ebvFcbB46-RS5R	Q65112A4051	OSLON
LY H9GP-6J5K-45-9B9C-350-R18-Z-BAY	Q65112A4010	OSLON	No sufficient future volume forecast	LY H9GP-HZKY-36-1-350-R18-Z	Q65111A7367	OSLON
LCY G6SP-DADB-5E-1-140-R33-Z-XIN	Q65112A4503	Advanced Power TOPLED	Reel size changed	LCY G6SP-CBEA-5E-47-140-R18-Z	Q65112A3666	Advanced Power TOPLED
LA B6SP-DBFA-24-G3R3-140-R33-Z	Q65112A6208	Power SIDELED	Brightness increase – dim selections need to be phased-out	LA B6SP-EAFB-24-G3R3-140-R33-Z	Q65112A9519	Power SIDELED
LR B6SP-CBEA-1-G3R3-140-R33-Z	Q65112A6209	Power SIDELED	Brightness increase – dim selections need to be phased-out	LR B6SP-DBFA-1-G3R3-140-R33-Z	Q65112A9765	Power SIDELED
LS B6SP-CADB-1-G3R3-140-R33-Z	Q65112A6210	Power SIDELED	Brightness increase – dim selections need to be phased-out	LS B6SP-CBEA-1-G3R3-140-R33-Z	Q65112A9766	Power SIDELED

# *Products Affected by Product Discontinuation Notification*

**Number:** OS-PDN-2019-060

**Name:** Product Discontinuation

**Release Date:** 10/31/2019

**Last Order:** 6/1/2020

**Last Delivery:** 11/1/2020

## DISCONTINUED

## NEW (REPLACEMENT)

<u>DISCONTINUED</u>			<u>NEW (REPLACEMENT)</u>				
<i>Product</i>	<i>QNumber</i>	<i>QNumber Description</i>	<i>Part Number</i>	<i>Product</i>	<i>QNumber</i>	<i>QNumber Description</i>	<i>Part Number</i>
LA B6SP	Q65111A3297	LA B6SP-CBEA-24-1-140-R33-Z	LA B6SP-CBEA-24-1	LA B6SP	Q65112A9519	LA B6SP-EAFB-24-G3R3-140-R33-Z	
LA B6SP	Q65111A5230	LA B6SP-DAEA-24-1-140-R33-Z	LA B6SP-DAEA-24-1-Z	LA B6SP	Q65112A9519	LA B6SP-EAFB-24-G3R3-140-R33-Z	
LA B6SP	Q65111A8491	LA B6SP-DBEA-24-1-140-R33-Z-XX	LA B6SP-DBEA-24-1-Z-XX	LA B6SP	Q65112A9519	LA B6SP-EAFB-24-G3R3-140-R33-Z	
LA B6SP	Q65112A6208	LA B6SP-DBFA-24-G3R3-140-R33-Z		LA B6SP	Q65112A9519	LA B6SP-EAFB-24-G3R3-140-R33-Z	
LB T673	Q65111A5140	LB T673-H1K2-24-1-2-R18-Z	LB T673-H1K2-24	LB T673	Q65112A2738	LB T673-H1K2-24-1-2-R18-Z	
LCW G6CP	Q65111A0060	LCW G6CP-DBEA-6R7T-0-140-R18-LM	LCW G6CP-DBEA-6R7T-LM	LCW G6CP	Q65112A9762	LCW G6CP-EAFB-4R9T-0-140-R18-Z	
LCW G6CP	Q65111A0079	LCW G6CP-DAFA-4R9T-0-140-R18-Z	LCW G6CP-DAFA-4R9T-Z	LCW G6CP	Q65112A9762	LCW G6CP-EAFB-4R9T-0-140-R18-Z	
LCW G6CP	Q65111A0080	LCW G6CP-DAFA-4U9X-0-140-R18-Z	LCW G6CP-DAFA-4U9X-Z	LCW G6CP	Q65112A9758	LCW G6CP-DBFA-4U9X-0-140-R18-Z	
LCW G6CP	Q65111A0081	LCW G6CP-DAFA-4J8K-0-140-R18-Z	LCW G6CP-DAFA-4J8K-Z	LCW G6CP	Q65112A9759	LCW G6CP-EAFB-4J8K-0-140-R18-Z	
LCW G6CP	Q65111A0082	LCW G6CP-DAFA-4L8N-0-140-R18-Z	LCW G6CP-DAFA-4L8N-Z	LCW G6CP	Q65112A9760	LCW G6CP-EAFB-4L8N-0-140-R18-Z	
LCW G6CP	Q65111A0083	LCW G6CP-DAFA-4O9Q-0-140-R18-Z	LCW G6CP-DAFA-4O9Q-Z	LCW G6CP	Q65112A9761	LCW G6CP-EAFB-4O9Q-0-140-R18-Z	
LCY G6SP	Q65112A4503	LCY G6SP-DADB-5E-1-140-R33-Z-XIN		LCY G6SP	Q65112A3666	LCY G6SP-CBEA-5E-47-140-R18-Z	
LE UW T1A5	Q65111A8521	LE UW T1A5 01-6R8R-ebxD46ebzB46-T01-LM	LE UW T1A5 01-6R8R-EBXD46EBZB	KW H5L531.	Q65112A4051	KW H5L531.TE-Z7R7-ebvFcbB46-RS5R	
LE UW T1A5	Q65112A1671	LE UW T1A5 01-6R7R-ebxD46-T01-LM	LE UW T1A5 01-6R7R-EBXD46-LM	KW H5L531.	Q65112A4051	KW H5L531.TE-Z7R7-ebvFcbB46-RS5R	
LO A67F	Q65111A5348	LO A67F-AAAB-3-1-30-R33-Z-DL	LO A67F-AAAB-3-1-Z-DL	LO A67F	Q65112A9514	LO A67F-ABCA-24-E3P3-30-R33-Z	
LO T67F	Q65111A5656	LO T67F-V2-34-1-20-R18-Z-BP	LO T67F-V2-34-1-Z-BP	LO T67F	Q65110A9230	LO T67F-V1AB-24-1-20-R18-Z	LO T67F-V1AB-24-1-Z
LR B6SP	Q65112A6209	LR B6SP-CBEA-1-G3R3-140-R33-Z		LR B6SP	Q65112A9765	LR B6SP-DBFA-1-G3R3-140-R33-Z	
LS B6SP	Q65112A6210	LS B6SP-CADB-1-G3R3-140-R33-Z		LS B6SP	Q65112A9766	LS B6SP-CBEA-1-G3R3-140-R33-Z	
LS T676	Q65110A3301	LS T676-N1P2-1-0-10-R33-Z-HAR	LS T676-N1P2-1-Z	LS T676	Q65110A2153	LS T676-P2S1-1-0-20-R18-Z	
LW A673	Q65111A9974	LW A673-Q2R1-HKK-0-10-R33-VI	LW A673-Q2R1-HKK-VI	LW A6SG	Q65112A1366	LW A6SG-V2BA-FK0PNO-0-20-R33-Z	LW A6SG-V2BA-FK0PNO
LW ETSG	Q65111A0196	LW ETSG-AABB-JKPL-1-30-R18-Z	LW ETSG-AABB-JKPL-1-Z	LW ETSG	Q65112A9743	LW ETSG-ABCA-JKPL-1-30-R18-Z	
LY G6SP	Q65111A5878	LY G6SP-DAEA-45-3B4B-140-R18-Z-APA	LY G6SP-DAEA-45-3B4B-Z-APA	LY G6SP	Q65112A3666	LY G6SP-CBEA-5E-47-140-R18-Z	
LY H9GP	Q65112A4010	LY H9GP-6J5K-45-9B9C-350-R18-Z-BAY		LY H9GP	Q65111A7367	LY H9GP-HZKY-36-1-350-R18-Z	LY H9GP-HZKY-36-1
LY M67F	Q65111A6911	LY M67F-U2-4-1-20-R18-Z-BP	LY M67F-U2-4-1-BP	LY M67F	Q65110A8980	LY M67F-T2V2-36-1-20-R18-Z	LY M67F-T2V2-36-Z
LY T67F	Q65111A2423	LY T67F-U1U2-35-1-20-R18-Z	LY T67F-U1U2-35-1-Z	LY T67F	Q65110A9231	LY T67F-U1AA-36-1-20-R18-Z	LY T67F-U1AA-36-1-Z
LY T67F	Q65111A4030	LY T67F-U2-4-1-20-R18-Z-BP	LY T67F-U2-4-1-Z-BP	LY T67F	Q65110A9231	LY T67F-U1AA-36-1-20-R18-Z	LY T67F-U1AA-36-1-Z
LY T68F	Q65110A9291	LY T68F-U2V1-5-1-20-R18-Z-XX	LY T68F-U2V1-5-1-Z-XX	LY T68F	Q65110A7322	LY T68F-V1AA-46-1-20-R18-Z	LY T68F-V1AA-46-1-Z
LY T68F	Q65111A5349	LY T68F-U2V1-56-1-20-R18-Z	LY T68F-U2V1-56-1	LY T68F	Q65110A7322	LY T68F-V1AA-46-1-20-R18-Z	LY T68F-V1AA-46-1-Z