

# K706 Series

Slim & Compact Relays

- Different colored test button for AC or DC
- Switch type On/Off structure for easy test
- LED indicator to show operation
- Socket with safety cover available



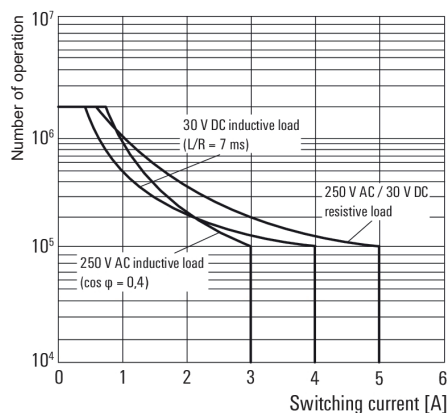
## Ordering Information

**K706 - 1PL D T 12VDC**  
 ① ② ③ ④

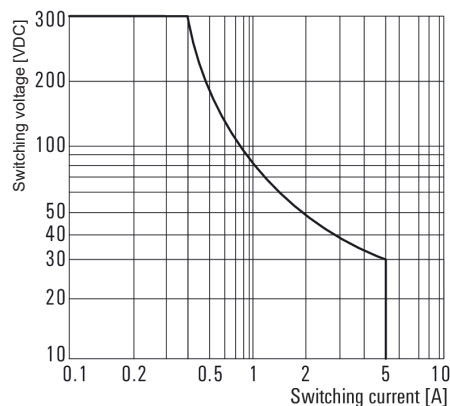
① Contact Ratings	<b>1PL</b>	1C
	<b>2PL</b>	2C
② Option	no mark	None
	<b>D</b>	Diode (Only DC)
③ Function	no mark	None
	<b>T</b>	Test Button Type (AC : Red, DC : Blue)
④ Coil Voltage	<b>12VDC</b>	12VDC
	<b>24VDC</b>	24VDC
	<b>24VAC</b>	24VAC
	<b>110VAC</b>	110VAC
	<b>230VAC</b>	230VAC

## Reference Data

Life cycle curve



DC load breaking capacity



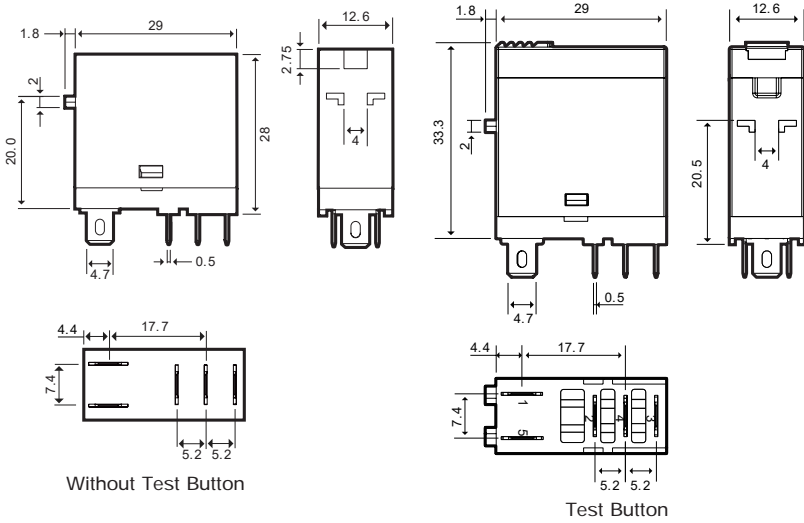
## Specifications

<b>Contact</b>	Contact Arrangement	1C	2C	
	Contact Material	Ag alloy (24K Gold Plt.)		
	Max. Rated Current (Resistance Load)	10A / 250VAC (1P 1C)	5A / 250VAC (2P 2C)	
	Max. Switching Current	10A (1P 1C)	5A (2P 2C)	
	Max. Switching Capacity	3,000VA (1P 1C)	2,000VA (2P 2C)	
	Min.Switching Current*	100mA 5VDC		
	Initial Contact Resistance	100mΩ (1A 6VDC)		
<b>Coil Spec.</b>	Coil Voltage	12VDC, 24VDC, 24VAC, 100/110VAC, 220/240VAC		
	Coil Consumption	DC(W) : 0.53 / AC(VA) : 1.0		
	Min. Pick-up Voltage	DC : 75% of Nominal Voltage AC : 80% of Nominal Voltage		
	Max. Dropout Voltage	DC : 10% of Nominal Voltage DC AC : 30% of Nominal Voltage AC		
<b>General Info.</b>	Operating Time	20ms		
	Release Time	10ms / Standard, 20ms / Diode		
	Insulation Resistance	1,000MΩ at 500VDC		
	Dielectric Strength	Between Contact Points	1,000Vrms 1min.	
		Between poles	3,000Vrms 1min.	
		Between Contact Points and Coil	5,000Vrms 1min	
	Life Cycle	Mechanical	Min. 10,000,000	
		Electrical	Min. 100,000	
	Vibration Resistant	Malfunction	10 ~ 55Hz (Durable Amplitude 1.5mm)	
		Destruction	10 ~ 55Hz (Durable Amplitude 1.5mm)	
	Shock Resistant	Malfunction	98 m/s	
Destruction		980 m/s		
Ambient Temperature	-40 ~ +55°C (with no Condensing)			
Ambient Humidity	35% ~ 85% RH			
<b>Socket</b>	Socket part number	KPX12/ KPX12-P	KPX22/KPX22-P	
	Terminal Tightened Torque	0.5N • m (5.10kgf • cm)		

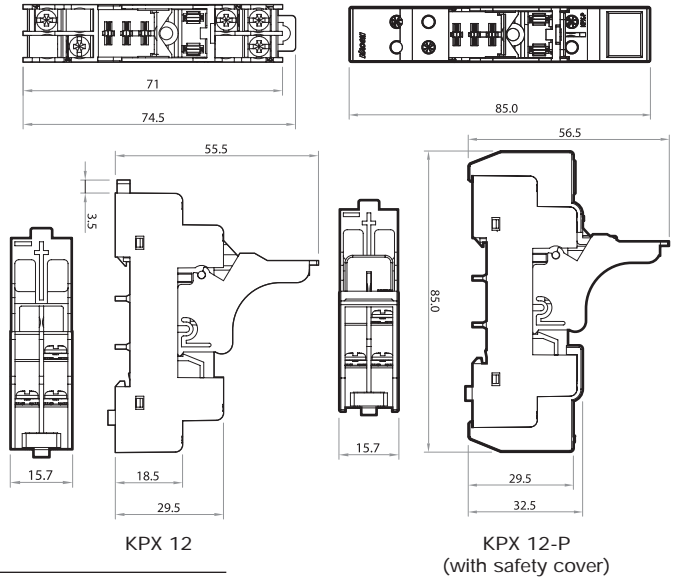
\*The minimum switching current is indicated as a standard value. The actual minimum switching rate is variable factor according to the make and break frequency, environmental condition and anticipated credibility level. Therefore, it is recommended that tests be done to test actual load value before the production process.

# K706-1PL

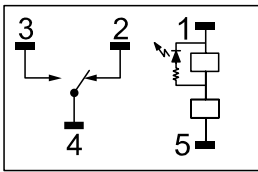
Relays Dimensions (unit: mm)



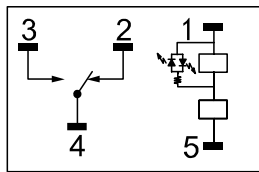
Socket Dimensions (unit: mm)



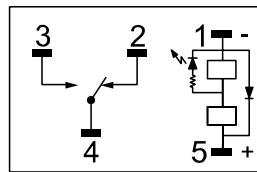
Wiring diagram



LED (AC)



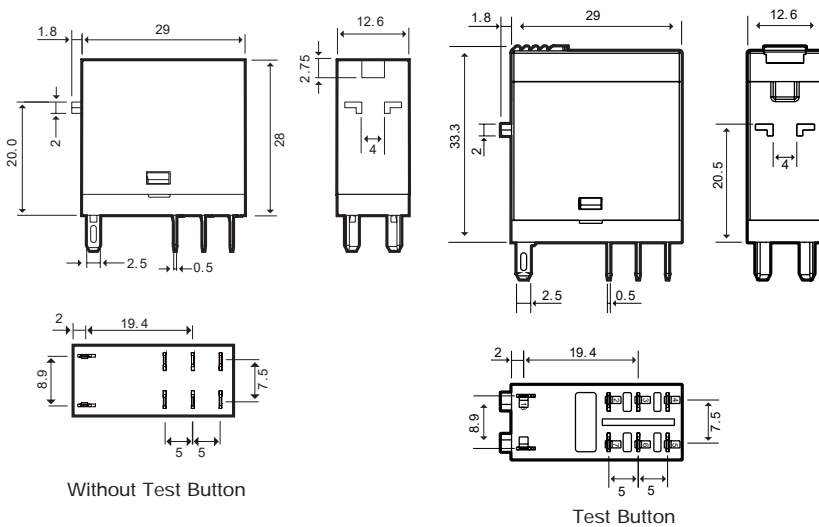
LED (DC)



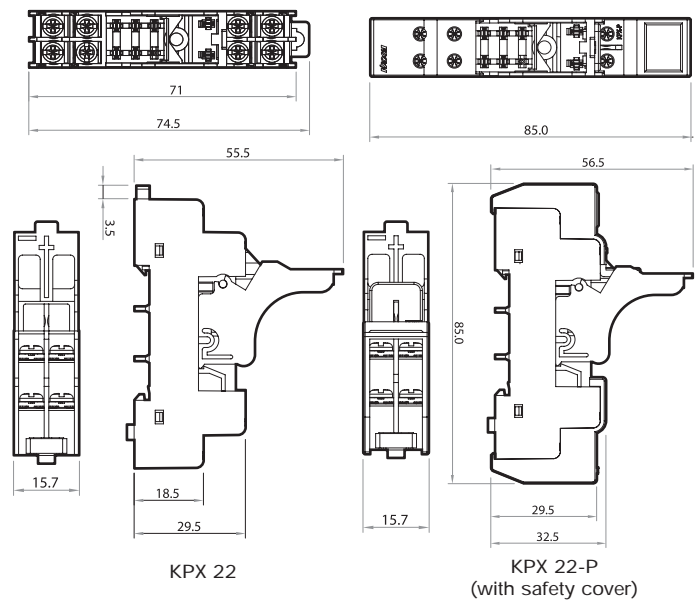
LED + Diode (DC)

# K706-2PL

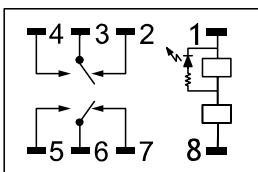
Relays Dimensions (unit: mm)



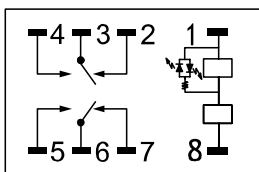
Socket Dimensions (unit: mm)



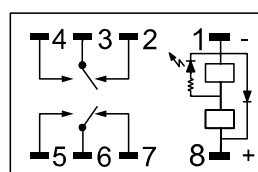
Wiring diagram



LED (AC)



LED (DC)



LED + Diode (DC)