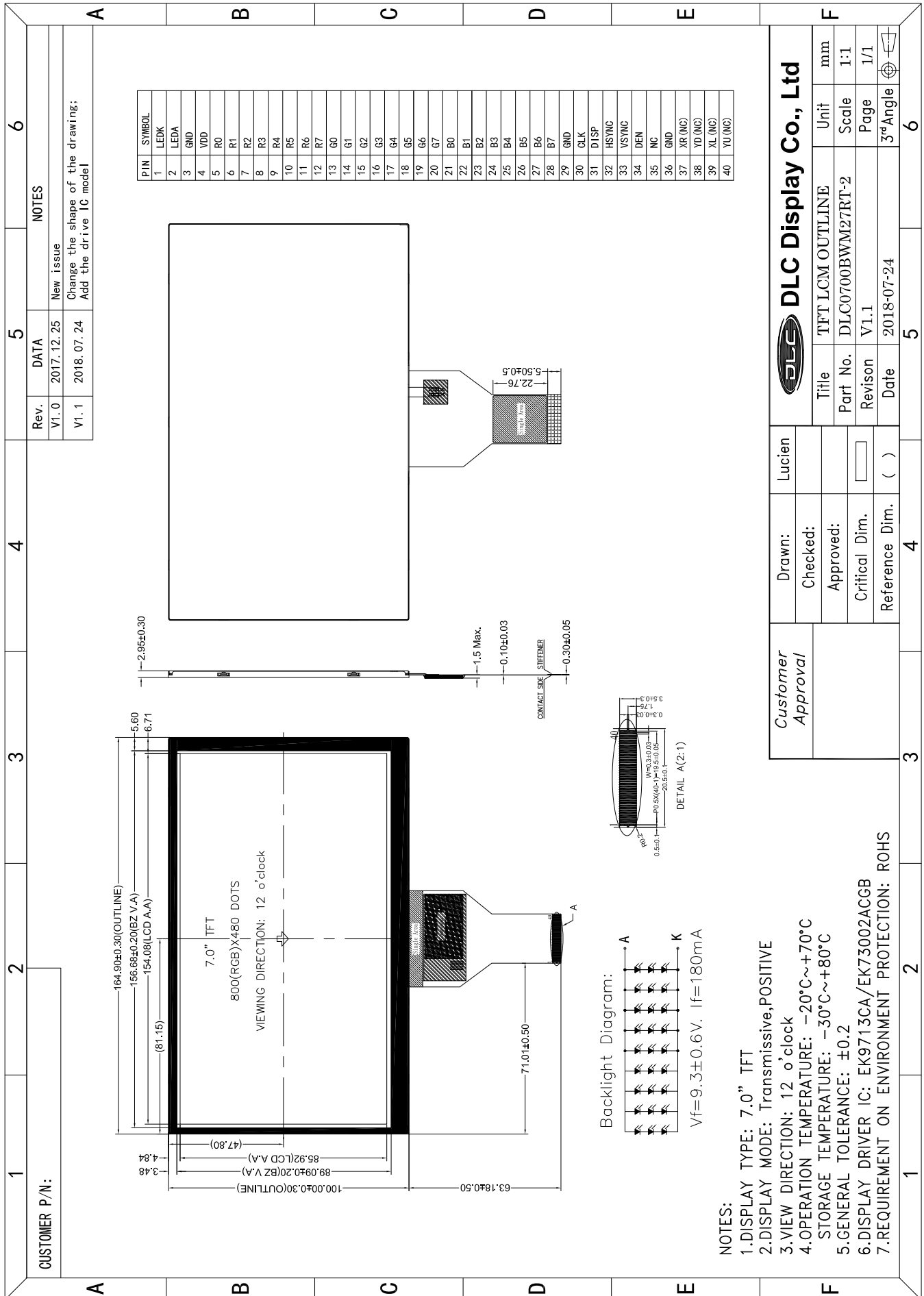


Outline Drawing



- NOTES:
- 1.DISPLAY TYPE: 7.0" TFT
  - 2.DISPLAY MODE: Transmissive, POSITIVE
  - 3.VIEW DIRECTION: 12 o'clock
  - 4.OPERATION TEMPERATURE: -20°C~+70°C
  - 5.STORAGE TEMPERATURE: -30°C~+80°C
  - 6.GENERAL TOLERANCE: ±0.2
  - 7.DISPLAY DRIVER IC: EK9713CA/EK73002ACGB
  - 7.REQUIREMENT ON ENVIRONMENT PROTECTION: ROHS

Customer Approval		Lucien	
Drawn:		Checked:	
Approved:		Approved:	
Critical Dim.		Reference Dim.	( )

DLC Display Co., Ltd			
Title	TFT LCM OUTLINE	Unit	mm
Part No.	DLC0700BWM27RT-2	Scale	1:1
Revision	V1.1	Page	1/1
Date	2018-07-24	3 <sup>rd</sup> Angle	