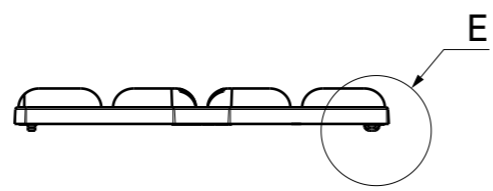
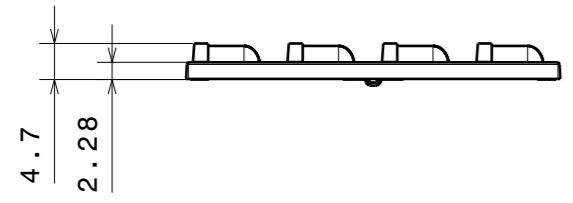
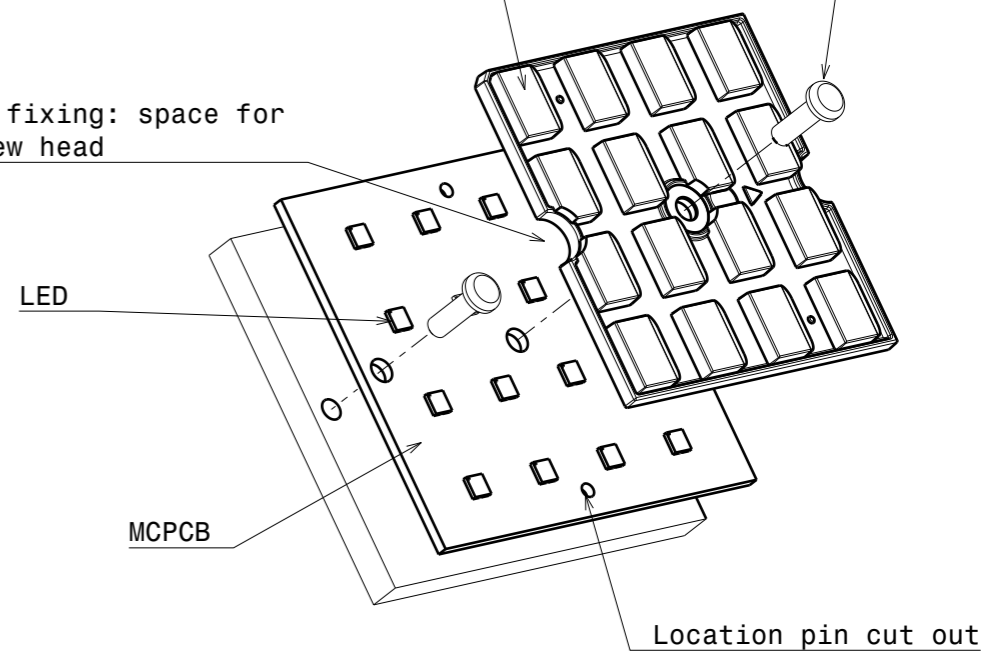


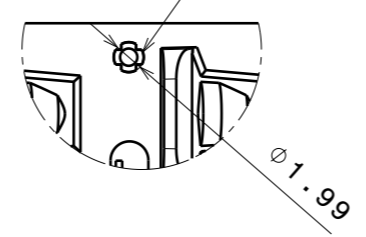
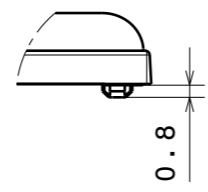
LENS: Recommended screw M3 for fixing
Use washer with screw if possible

STRADELLA-16 lens

PCB fixing: space for screw head

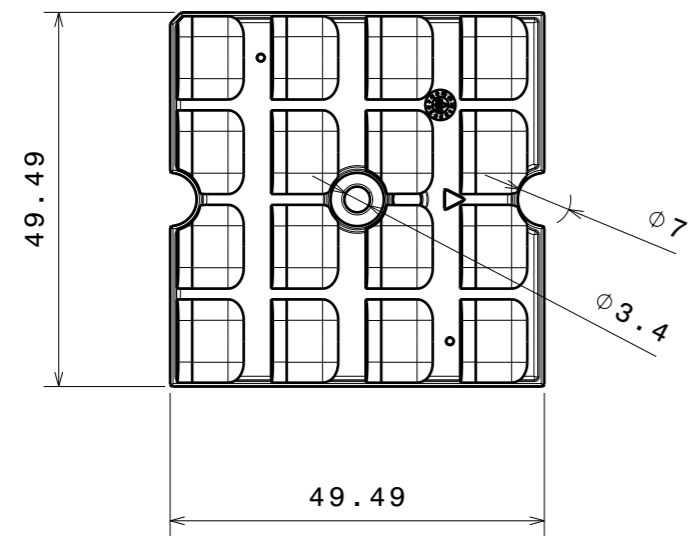


Hole to PCB: one round min. dia 2mm, other to be elongated.



Detail: E

Detail: D
Location Pin



Notes

| | |
|---|---|
| 1 | PCB or heatsink level. |
| 2 | LED location. |
| 3 | Ensure LED fitting from a product specific 3D model available from www.ledil.com . |

| PART | TYPE | MATERIAL | COLOR / COATING |
|------------------------|------|----------|-----------------|
| C16751_STRADELLA-16-T2 | LENS | PMMA | CLEAR |

| | |
|---|-----------------------------|
| MECHANICAL DRAWING | |
| PRODUCT STRADELLA | |
| Plastic moulding general tolerances according to DIN 16901-130 and applies if not otherwise shown in the drawing. Silicone moulding general tolerances according to ISO 3302-1 Class M3 and applies if not otherwise shown in the drawing. | FIRST ANGLE PROJECTION: |
| SCALE 1:1 | WEIGHT 6,6 g |

LEDiL®

This drawing is the property of LEDiL Oy. It may not be reproduced, copied or communicated without a written agreement with LEDiL Oy.

A3 SHEET 1/1