



# Product Change Notification



Product Group: Diodes Division / August 2, 2019 / PCN-DD-016-2019 Rev.0

## Production move of TO-220FP and TO-220 Part Numbers

**DESCRIPTION OF CHANGE:** Due to an unexpected assembly line shut down, Vishay Semiconductors is forced to interrupt the production of the below Part numbers in the current site. To assure the continuity of the business, the production will be moved to other subcontractors already used for the same packages. Bill of Materials will change as shown in annex 1 while package outline dimensions at subcontractors are shown in annex 2.

**CLASSIFICATION OF CHANGE:** Assembly Site

**REASON FOR CHANGE:** Production lines shut down

**EXPECTED INFLUENCE ON QUALITY/RELIABILITY/PERFORMANCE:** There will be no effect on quality, reliability or electrical performance.

**PRODUCT CATEGORY:** Diodes & Rectifiers

### PART NUMBERS/SERIES/FAMILIES AFFECTED:

FREDS – TO-220FP
VS-ETH0806FP-M3
VS-ETH1506FP-M3
VS-ETH3006FP-M3
VS-ETL0806FP-M3
VS-ETL1506FP-M3
VS-ETU0805FP-M3
VS-ETU1506FP-M3
VS-ETU3006FP-M3
VS-ETU3006FP-M3R
VS-ETX0806FP-M3
VS-ETX1506FP-M3

FREDS – TO-220
VS-ETH0806-M3
VS-ETH1506-M3
VS-ETH3006-M3
VS-ETL0806-M3
VS-ETL1506-M3
VS-ETU0805-M3
VS-ETU1506-M3
VS-ETU3006-M3
VS-ETX0806-M3
VS-ETX1506-M3

**VISHAY BRAND(s):** Vishay Semiconductors

**TIME SCHEDULE:** Vishay may start to ship the above products from the new subcontractors before October the 2<sup>nd</sup>, 2019 based on existing inventory depletion and upon customer approvals.

**SAMPLE AVAILABILITY:** Samples available on request

**PRODUCT IDENTIFICATION:** Products manufactured at new location will be identified by the new plant digit of the data code marked on the 2nd line of the part.

**QUALIFICATION DATA:** See annex 3

**The PCN is considered approved, without further notification, unless we receive specific customer written concerns before September 2, 2019 or as specified by contract.**

**ISSUED BY:** Alessandro Bonaudo, Vishay Diodes Product Marketing  
e-mail: [Alessandro.Bonaudo@vishay.com](mailto:Alessandro.Bonaudo@vishay.com)

**For further information, please contact your regional Vishay office**

**CONTACT INFORMATION:**

**The Americas**

Vishay Semiconductors  
150 Motor Parkway, Suite 101E  
Hauppauge, NY11788 USA  
Phone : 631 300 3816  
Fax : 631 300 3843  
[Diodes-Americas@vishay.com](mailto:Diodes-Americas@vishay.com)

**Europe**

Vishay Semiconductors  
Theresienstrasse 2  
D-74072 Heilbronn, Germany  
Phone: + 49 7131 67 3364 (3365)  
Fax: + 49 7131 67 2938  
[Diodes-Europe@vishay.com](mailto:Diodes-Europe@vishay.com)

**Asia**

Vishay Semiconductors  
15D, Sun Tong Infoport Plaza  
55 Huai Hai West Road  
Shanghai, Cina  
Phone: + 86 138 1787 2112  
Fax: + 86 21 5258 7979  
[Diodes-Asia@vishay.com](mailto:Diodes-Asia@vishay.com)

**ANNEX 1**  
**Bill of Materials**

**TO-220**

	FROM	TO
Mold Compound	KHG200	GR260SL

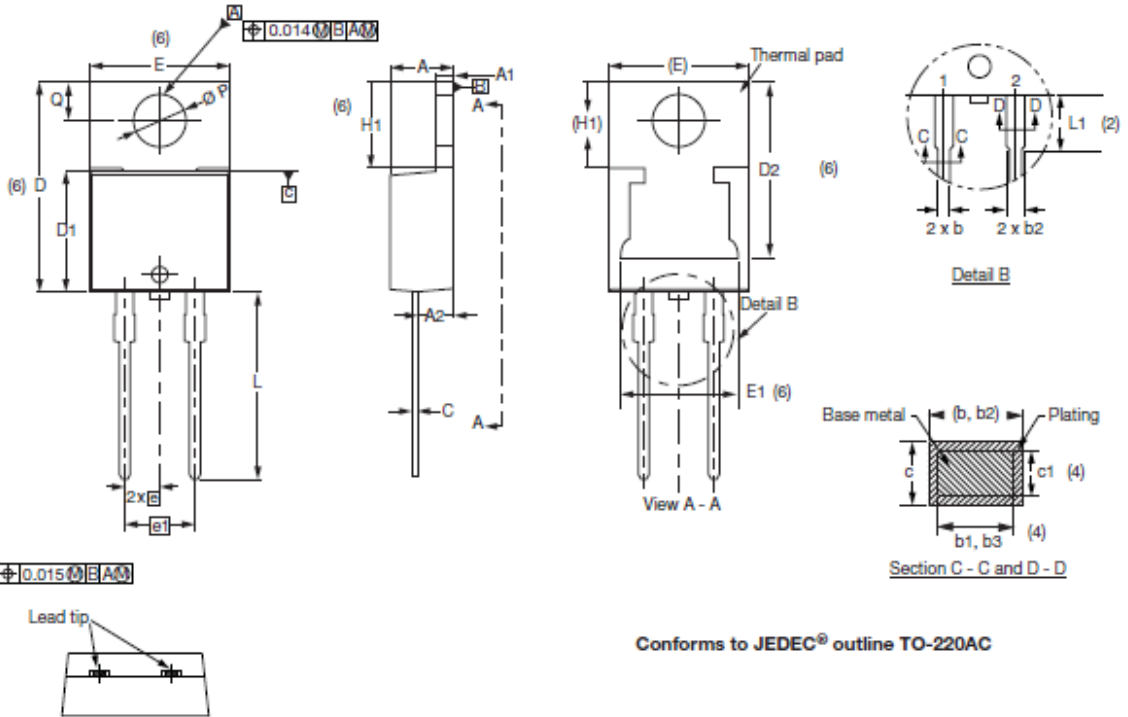
**TO-220FP**

	FROM	TO
Mold Compound	KTMC-3097GX	KTMC-3097GXM
Die Attach Solder	92.5Pb5Sn2.5Ag	Sb10Sn65Ag25

# ANNEX 2 Package Outline Dimensions

## 2L TO-220AC

**DIMENSIONS** in millimeters and inches



SYMBOL	MILLIMETERS		INCHES		NOTES	SYMBOL	MILLIMETERS		INCHES		NOTES
	MIN.	MAX.	MIN.	MAX.			MIN.	MAX.	MIN.	MAX.	
A	4.25	4.65	0.167	0.183		D2	11.68	13.30	0.460	0.524	6, 7
A1	1.14	1.40	0.045	0.055		E	10.11	10.51	0.398	0.414	3, 6
A2	2.50	2.92	0.098	0.115		E1	6.86	8.89	0.270	0.350	6
b	0.69	1.01	0.027	0.040		e	2.41	2.67	0.095	0.105	
b1	0.38	0.97	0.015	0.038	4	e1	4.88	5.28	0.192	0.208	
b2	1.20	1.73	0.047	0.068		H1	6.09	6.48	0.240	0.255	6
b3	1.14	1.73	0.045	0.068	4	L	13.52	14.02	0.532	0.552	
c	0.36	0.61	0.014	0.024		L1	3.32	3.82	0.131	0.150	2
c1	0.36	0.56	0.014	0.022	4	Ø P	3.54	3.91	0.139	0.154	
D	14.85	15.35	0.585	0.604	3	Q	2.60	3.00	0.102	0.118	
D1	8.38	9.02	0.330	0.355							

**Notes**

- (1) Dimensioning and tolerancing as per ASME Y14.5M-1994
- (2) Lead dimension and finish uncontrolled in L1
- (3) Dimension D, D1, and E do not include mold flash. Mold flash shall not exceed 0.127 mm (0.005") per side. These dimensions are measured at the outermost extremes of the plastic body
- (4) Dimension b1, b3, and c1 apply to base metal only
- (5) Controlling dimensions: inches
- (6) Thermal pad contour optional within dimensions E, H1, D2, and E1
- (7) Outline conforms to JEDEC® TO-220, except D2

# 2L TO-220 FullPAK

**DIMENSIONS** in millimeters

