

Light is OSRAM

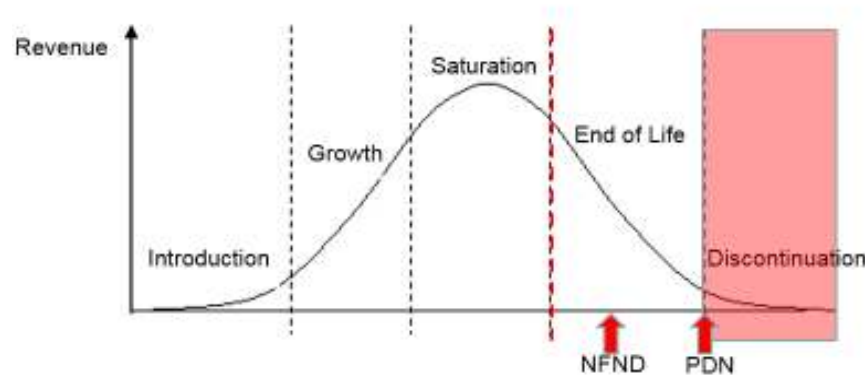
## Product Discontinuation (acc. JEDEC J-STD-048) OS-PD-2017-067

19-Oct-2017

---

|                       |  |
|-----------------------|--|
| <b>Last order:</b>    | 15-Jan-2018                                |
| <b>Last delivery:</b> | 15-Apr-2018                                |
| <b>Reason:</b>        | Replaced by 10K reel as per market request |

---



Please direct your feedback to your local Sales office.

| DISCONTINUED                    |               |          |           | NEW (REPLACEMENT)               |                         |          |           |
|---------------------------------|---------------|----------|-----------|---------------------------------|-------------------------|----------|-----------|
| Device                          | Ordering Code | Function | Brand     | Device                          | Datasheet Ordering Code | Function | Brand     |
| GW JCLPS2.EM-GTHP-A838-1-65-R18 | Q65112A0421   | LED      | DURIS E 3 | GW JCLPS2.EM-GUHQ-A838-1-65-R33 | Q65112A4655             | LED      | DURIS E 3 |
| GW JCLPS2.EM-GTHP-XX58-1-65-R18 | Q65112A0420   | LED      | DURIS E 3 | GW JCLPS2.EM-GUHQ-XX58-1-65-R33 | Q65112A4638             | LED      | DURIS E 3 |
| GW JCLPS2.EM-GUHQ-A636-1-65-R18 | Q65112A0419   | LED      | DURIS E 3 | GW JCLPS2.EM-HPHR-A636-1-65-R33 | Q65112A4639             | LED      | DURIS E 3 |
| GW JCLPS2.EM-GUHQ-XX56-1-65-R18 | Q65112A0417   | LED      | DURIS E 3 | GW JCLPS2.EM-HPHR-XX56-1-65-R33 | Q65112A4634             | LED      | DURIS E 3 |
| GW JCLPS2.EM-HPHR-A232-1-65-R18 | Q65112A0414   | LED      | DURIS E 3 | GW JCLPS2.EM-HPHR-A232-1-65-R33 | Q65112A4637             | LED      | DURIS E 3 |
| GW JCLPS2.EM-HPHR-XX52-1-65-R18 | Q65112A0410   | LED      | DURIS E 3 | GW JCLPS2.EM-HPHR-XX52-1-65-R33 | Q65112A4635             | LED      | DURIS E 3 |
|                                 |               |          |           |                                 |                         |          |           |
|                                 |               |          |           |                                 |                         |          |           |

## *Products Affected by Product Discontinuation Notification*

**Number:** OS-PD-2017-067

**Name:** Replaced by 10K reel a per market request

**Release Date:** 10/19/2017

**Last Order:** 1/15/2018

**Last Delivery:** 4/15/2018

### *DISCONTINUED*

### *NEW (REPLACEMENT)*

| <i>Product</i> | <i>QNumber</i> | <i>QNumber Description</i>      | <i>Part Number</i>       | <i>Product</i> | <i>QNumber</i> | <i>QNumber Description</i>      | <i>Part Number</i> |
|----------------|----------------|---------------------------------|--------------------------|----------------|----------------|---------------------------------|--------------------|
| GW JCLPS2.     | Q65112A0410    | GW JCLPS2.EM-HPHR-XX52-1-65-R18 | GW JCLPS2.EM-HPHR-XX52-1 | GW JCLPS2.     | Q65112A4635    | GW JCLPS2.EM-HPHR-XX52-1-65-R33 |                    |
| GW JCLPS2.     | Q65112A0414    | GW JCLPS2.EM-HPHR-A232-1-65-R18 | GW JCLPS2.EM-HPHR-A232-1 | GW JCLPS2.     | Q65112A4637    | GW JCLPS2.EM-HPHR-A232-1-65-R33 |                    |
| GW JCLPS2.     | Q65112A0417    | GW JCLPS2.EM-GUHQ-XX56-1-65-R18 | GW JCLPS2.EM-GUHQ-XX56-1 | GW JCLPS2.     | Q65112A4634    | GW JCLPS2.EM-HPHR-XX56-1-65-R33 |                    |
| GW JCLPS2.     | Q65112A0419    | GW JCLPS2.EM-GUHQ-A636-1-65-R18 | GW JCLPS2.EM-GUHQ-A636-1 | GW JCLPS2.     | Q65112A4639    | GW JCLPS2.EM-HPHR-A636-1-65-R33 |                    |
| GW JCLPS2.     | Q65112A0420    | GW JCLPS2.EM-GTHP-XX58-1-65-R18 | GW JCLPS2.EM-GTHP-XX58-1 | GW JCLPS2.     | Q65112A4638    | GW JCLPS2.EM-GUHQ-XX58-1-65-R33 |                    |
| GW JCLPS2.     | Q65112A0421    | GW JCLPS2.EM-GTHP-A838-1-65-R18 | GW JCLPS2.EM-GTHP-A838-1 | GW JCLPS2.     | Q65112A4655    | GW JCLPS2.EM-GUHQ-A838-1-65-R33 |                    |