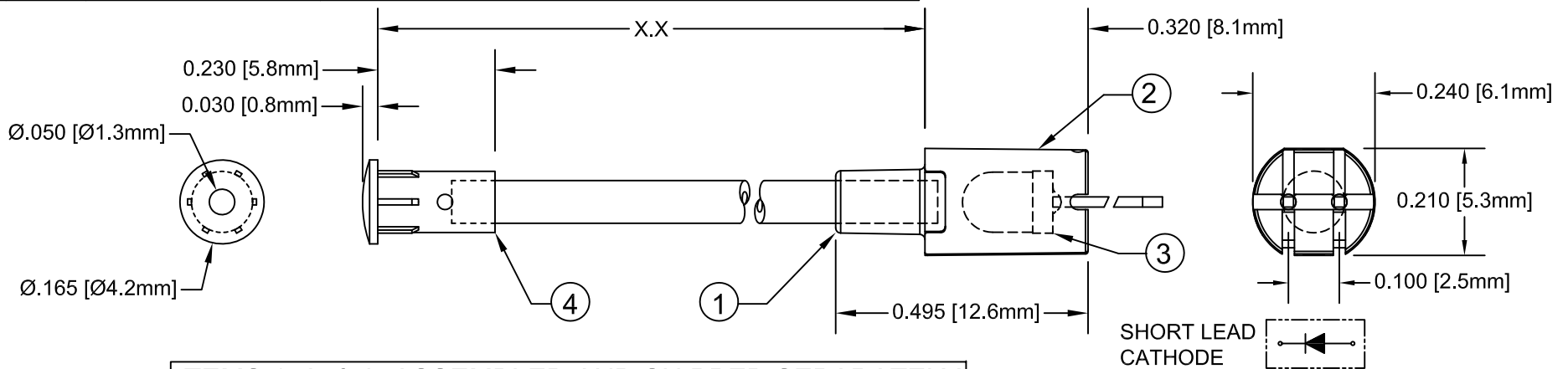
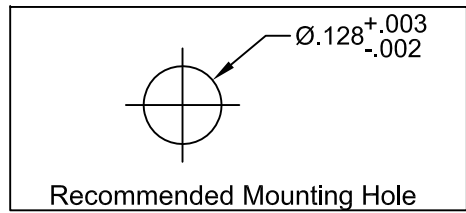


ITEM	Q'TY	PART NUMBER	PART DESCRIPTION
1	1	PML3-1	Bushing, FLEXible Light Pipe Adapter
2	1	PML3-2	Body, Flexible Light Pipe Adapter
3	1	3IR-940	T-1 (3mm) Infrared LED
4	1	LC-IR-XX.X	IR Lens Cap / FLPS1022-X.XXX Assembly ( X.XXX, Cut Length in Inches)

REV.	DESCRIPTION	DATE	APPROVED
A	Engineering Release.	05/20/09	T. Y.
B	Added Polarity Diagram.	03/22/10	T. Y.
C	Updated Fiber To FLPS In BOM	11/16/12	T. Y.



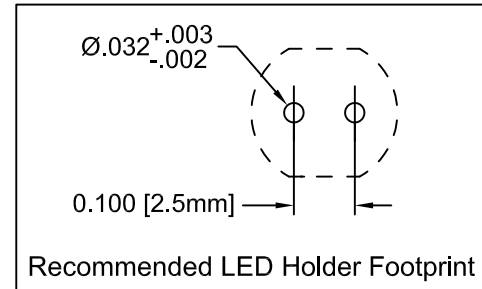
**ITEMS 1, 2, & 3 ASSEMBLED AND SHIPPED SEPARATELY**



Recommended Mounting Hole

" X.X " *	Tolerance
1.0" ~ 16.0"	±0.050"
16.1" ~ 40.0"	±0.15"
40.1" ~ 80.0"	±0.30"
80.1" ~ 3,940.0"	±0.5%

\* Available in 0.1" increments only



Recommended LED Holder Footprint

LED OPTICAL / ELECTRICAL CHARACTERISTICS					
Parameter	Test Condition	Minimum	Typical	Maximum	Units
Radiant Intensity	I <sub>F</sub> = 50mA	11.78	33.4	-	mW/sr
Forward Voltage	I <sub>F</sub> = 50mA	-	1.25	1.5	V
Peak Wavelength	I <sub>F</sub> = 20mA	-	940	-	nm
Spectral Line-Half Width	I <sub>F</sub> = 20mA	-	50	-	nm
Viewing Angle	I <sub>F</sub> = 20mA	-	50	-	deg

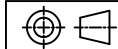
Lens Appearance: Blue Transparent

LED ABSOLUTE MAXIMUM RATINGS		
Parameter	Maximum Rating	Unit
Power Dissipation	100	mW
Continuous Forward Current	100	mA
Peak Forward Current	1.0	A
Reverse Voltage	5	V
Reverse Current	10	uA

## ABSOLUTE TEMPERATURE RATINGS (Ta=25°C)

OPERATING TEMPERATURE RANGE \_\_\_\_\_ -25° C - 85° C  
 STORAGE TEMPERATURE \_\_\_\_\_ -30° C - 100° C  
 LEAD SOLDERING TEMPERATURE(1/16" FROM BODY) \_\_\_\_\_ 260° C FOR 5 SECONDS

STANDARD TOLERANCE ( UNLESS OTHERWISE SPECIFIED )	
DECIMALS	ANGULAR
.X ±.1	X° ± 1°
.XX ±.02	
.XXX ±.010	



**BIVAR**<sup>®</sup>

4 THOMAS, IRVINE, CA. 92618  
 TEL: (949) 951-8808 FAX: (949) 951-3974

**TITLE:** FLEXIBLE LIGHT-PIPE LED ADAPTER ASSY, IR

DESIGNED: <b>Raffy Paje</b>	DATE: <b>05/20/09</b>
CHECKED: <b>F. Jensen</b>	DATE: <b>05/20/09</b>

<b>PART NO:</b> FLPIRVXX.XIR940	<b>REVISION:</b> C
<b>CAGE CODE :</b> 32559	<b>SHEET #</b> 1 OF 1
CAD GENERATED DOCUMENT. DO NOT MEASURE DRAWING.	