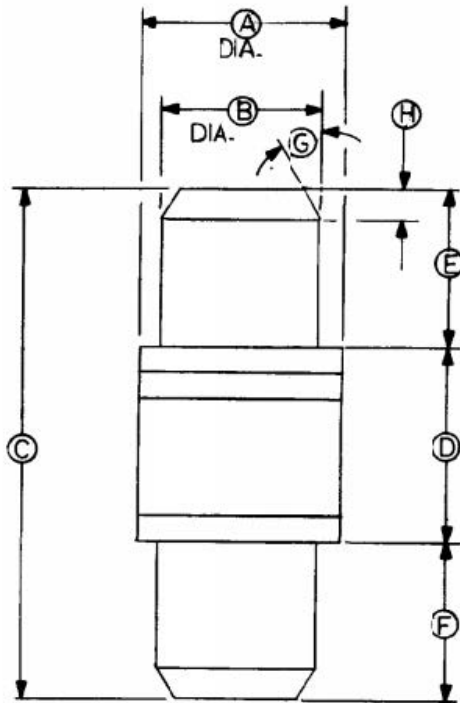


REVISIONS	
REV	DESCRIPTION
F1	DWG INITIATED



D M.	INCHES		M. METERS	
	MIN.	MAX.	MIN.	MAX.
A	.078	.086	2.01	2.11
B	.060	.064	1.52	1.63
C	.190	.210	4.85	5.33
D	.070	.087	1.68	2.21
E	.060	.064	1.52	1.63
F	.060	.064	1.52	1.63
G	30°	NOMINAL	30°	NOMINAL
H	.009	.015	.229	.381

- NOTES:
- METAL PARTS TO BE GOLD PLATED
MIN. 10 M.S. I.
 - MARKING TO BE:
ONE, TWO OR THREE (PREFERRED) COLOR DOT
DENOTING THE LAST ONE, TWO OF THREE DIGITS
OF THE M/A NUMBER AT THE CATHODE END.

CAUTION
THIS DOCUMENT CARRIER
CONFIDENTIAL INFORMATION
REVISIONS TO THIS DOCUMENT
MUST BE REFLECTED ON
CCP A 42408

UNLESS OTHERWISE SPECIFIED INTERPRET DRAWING PER ASME Y14.5 DO NOT SCALE THIS DRAWING	UNLESS OTHERWISE SPECIFIED DIMENSIONS ARE IN INCHES		MACOM Technology Solutions, Inc. 100 Chelmsford Street Lowell, MA 01851		
	NOTE: THIS DRW INCORPORATES THIRD ANGLE PROJECTION 	TOLERANCES ON			
M/A-COM Technology Solutions, INC. CONFIDENTIAL INFORMATION SUBJECT TO NDA <small>The information contained in this document or material is the valuable and confidential property of M/A-COM Technology Solutions Holdings, Inc. and/or its subsidiaries or affiliates (collectively MACOM), provided to you subject to a non-disclosure agreement between you and MACOM solely for use in supporting MACOM's business as and to the extent MACOM authorizes in writing from time to time. This information shall be held in strictest confidence and shall not be reproduced, published, disclosed to others, or used for any purpose except as and to the extent specifically authorized by MACOM in a separate written agreement. If permission is granted for reproduction, this document or material shall be promptly returned to MACOM or destroyed upon request, completion of the use for which it was made available to recipient, or termination of MACOM's relationship with recipient, whichever first occurs.</small>	DECIMALS	ANGLES	TITLE <h2 style="text-align: center;">Outline Drawing</h2>		
	.X ± .1 .XX ± .02 .XXX ± .005 .XXXX ± .0005	±0.5°			
	UNLESS OTHERWISE SPECIFIED $\sqrt[63]{}$ ALL OVER	MATERIAL		SIZE	CAGE CODE
APPLICATION	X	X	A	55NN2	OD-S-119
	NEXT ASSY	USED ON	FINISH	SCALE:	WEIGHT / SHEET 1 OF 1
			X	X/X	