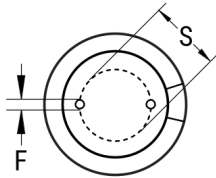


SIDE VIEW



TERMINAL END VIEW



Click [here](#) for the 3D model.

### Dimensions

D	10mm +/-0.5mm
L	15mm +2mm
S	5mm +/-0.5mm
LL Negative	15mm MIN
LL Positive	20mm MIN
F	0.6mm NOM

### Packaging Specifications

Packaging	Bulk, Bag
Packaging Quantity	3000

### General Information

Series	ESC
Dielectric	Aluminum Electrolytic
Description	LowESR Single Ended Aluminum Electrolytic
Features	Low ESR
RoHS	Yes
Lead	Wire Leads
AEC-Q200	No

### Specifications

Capacitance	470 uF
Capacitance Tolerance	20%
Voltage DC	25 VDC, 32 VDC (Surge)
Temperature Range	-40/+105°C
Rated Temperature	105°C
Life	3000 Hrs
Dissipation Factor	10%
Resistance	0.064 Ohms (100kHz)
Ripple Current	1050 mAmps (100kHz 105C)
Leakage Current	117.5 uA (2min 20°C)
Impedance Ratio at -25C	3
Impedance Ratio at -40C	4